

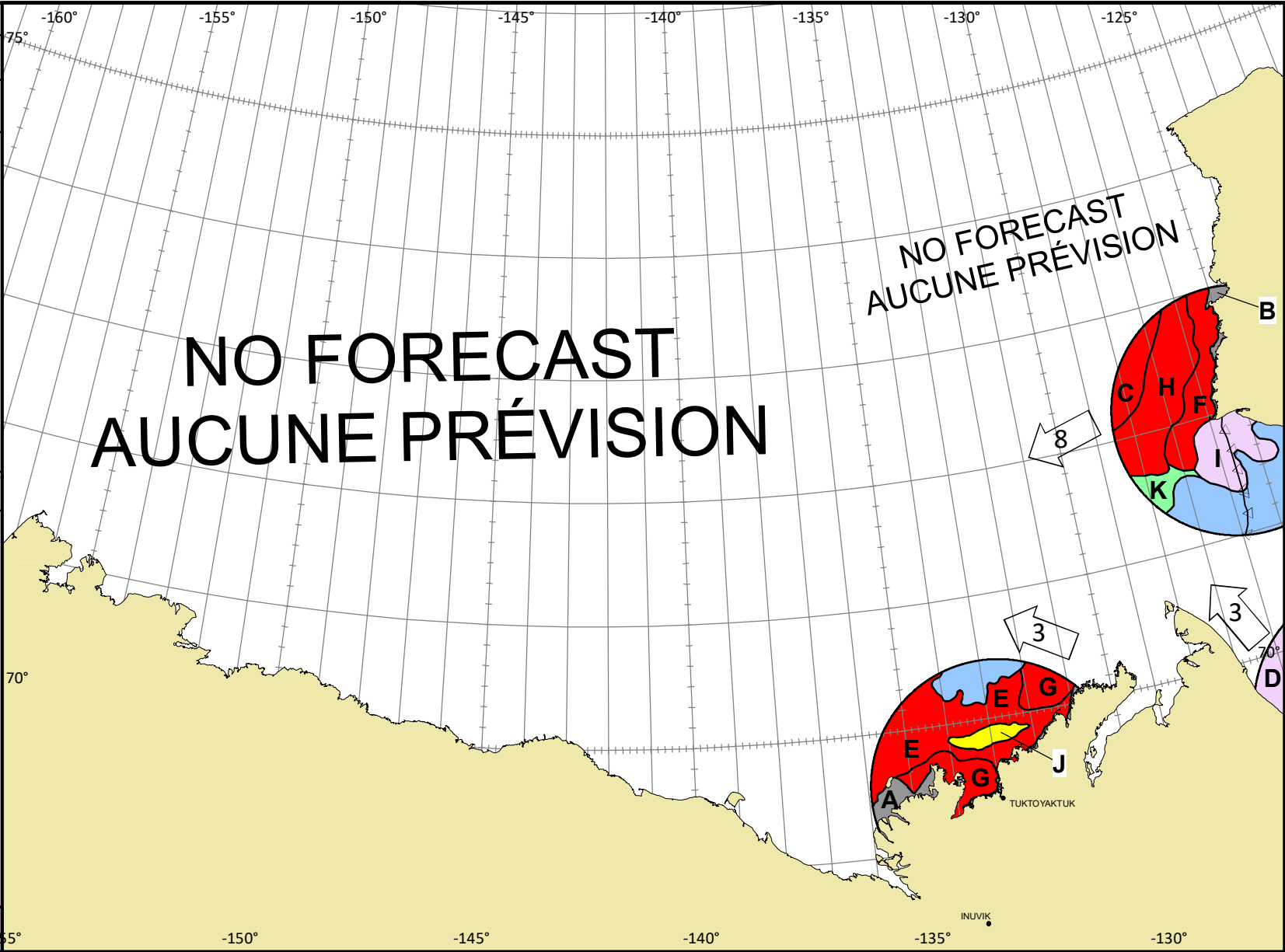
Based On/Basée sur:
RCM 4/14Z-16Z
4/02Z-04Z
AMSR-2 3/18Z-4/8Z

© 2023 CANADIAN ICE SERVICE
SERVICE CANADIEN DES GLACES
Environment and Climate Change Canada Environnement et Changement climatique Canada

WMO Colour Code - Concentration
Code de couleurs de l'OMM - Concentration

- Ice free
Libre de glace
- <1/10
- 1-3/10
- 4-6/10
- 7-8/10
- 9-10/10
- Fast ice
Banquise côtière
- Undefined
Indéterminée
- New
Nouvelle
- Nilas/grey
Nilas/grise

NM/Day MN/Jour Local Drift Next 24h
Dérive Locale Prochain 24h



A	$\frac{10}{6\ 4}$	B	$\frac{10}{1\ 2\ 7}$	C	$\frac{9+}{3\ 1\ 5}$	D	$\frac{9}{9\ 8\ 5}$	E	$\frac{9}{4\ 5}$	F	$\frac{9}{4\ 1}$	G	$\frac{9}{2\ 5\ 2}$	H	$\frac{9}{1\ 2\ 4}$	I	$\frac{7}{4\ 1}$	J	$\frac{5}{3\ X}$	K	$\frac{2}{1\ 1}$
	$\frac{5\ 4}{3\ 8}$		$\frac{9\ 5\ 4}{4\ 3\ 8}$		$\frac{4}{9\ 8\ 5}$		$\frac{1}{X}$		$\frac{4\ 1}{3\ X}$		$\frac{4\ 1}{3\ X}$		$\frac{5\ 4\ 1}{4\ 3\ X}$		$\frac{9\ 5\ 4}{4\ 3\ 3}$		$\frac{1}{X}$		$\frac{1}{X}$		$\frac{4\ 1}{3\ X}$