




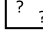


Alaskan Coast
Cote d'Alaska

V 1800 Z
24 JUN/JUIN 2023

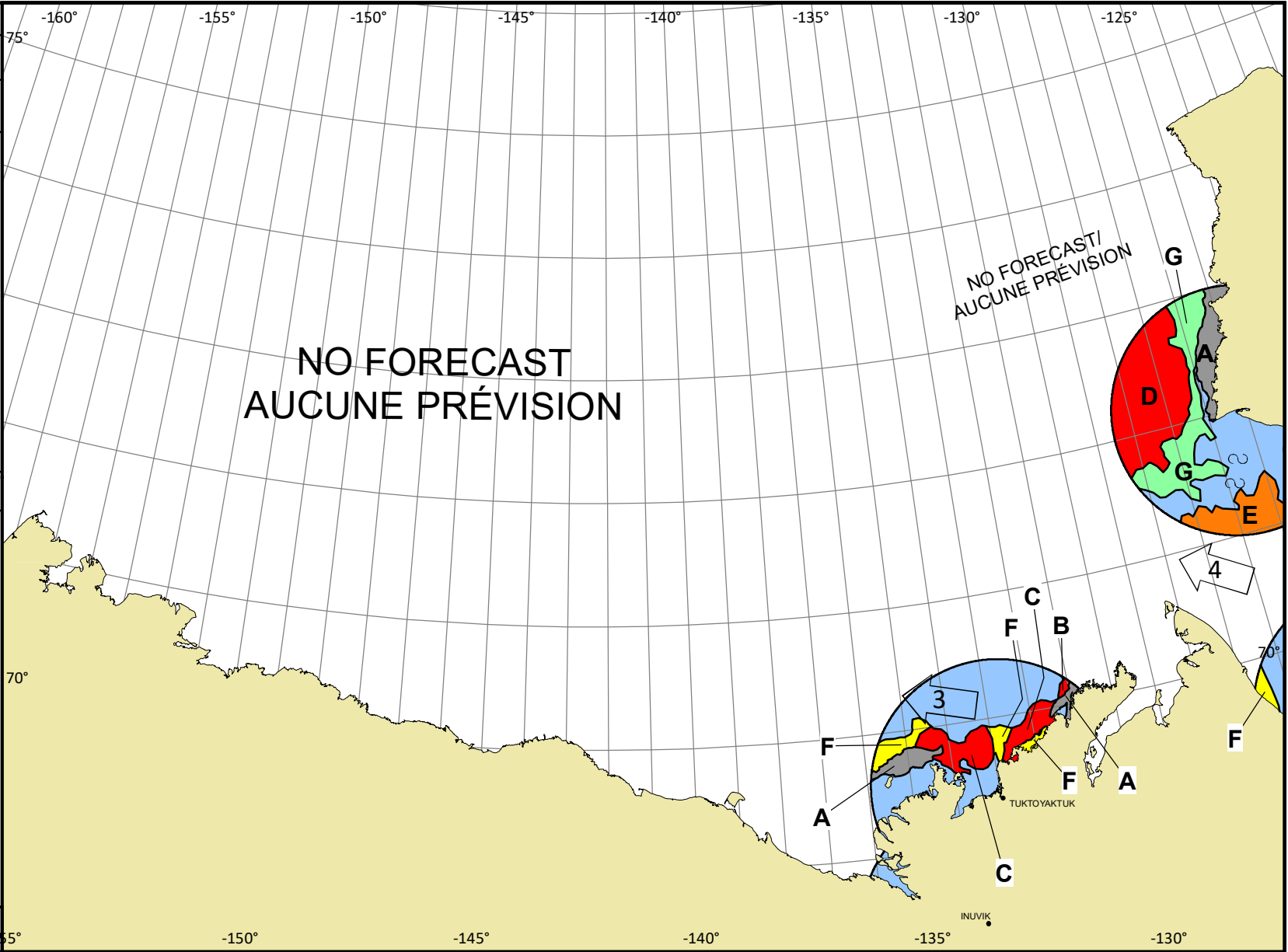
Based On/Basée sur:
RCM 24/15-16Z
MODIS 24/12Z Mainly cloudy /
généralement nuageux

© 2023 CANADIAN ICE SERVICE
SERVICE CANADIEN DES GLACES
Environment and Climate Change Canada /
Environnement et Changement climatique Canada

WMO Colour Code - Concentration
Code de couleurs de l'OMM - Concentration

-  Ice free
Libre de glace
-  <1/10
-  1-3/10
-  4-6/10
-  7-8/10
-  9-10/10
-  Fast ice
Banquise côtière
-  Undefined
Indéterminée
-  New
Nouvelle
-  Nilas/grey
Nilas/grise

NM/Day Local Drift Next 24h
MN/Jour Dérive Locale Prochain 24h



NO FORECAST
AUCUNE PRÉVISION

NO FORECAST/
AUCUNE PRÉVISION

