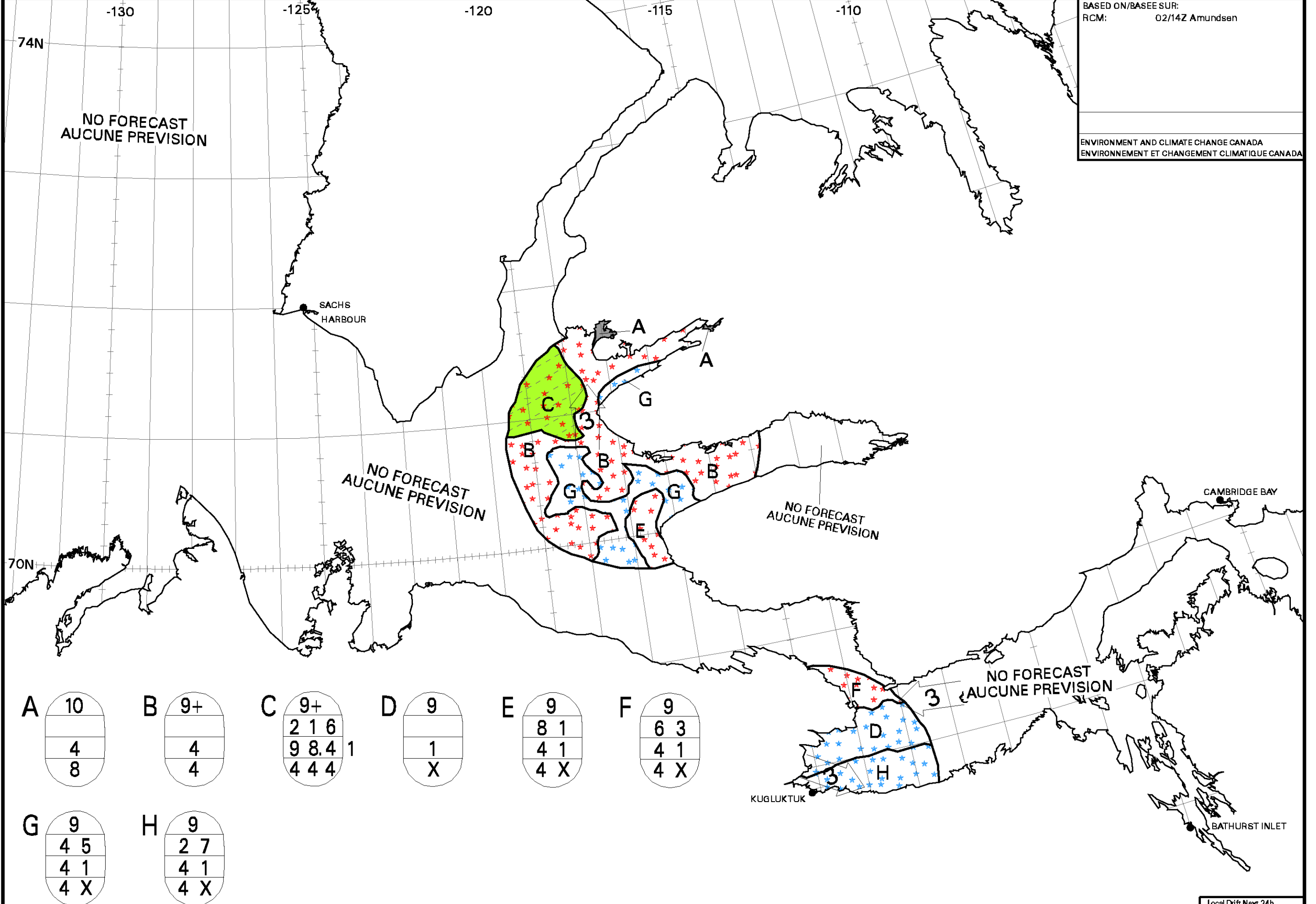


BASED ON/BASÉ SUR:
RCM: 02/14Z Amundsen

ENVIRONMENT AND CLIMATE CHANGE CANADA
ENVIRONNEMENT ET CHANGEMENT CLIMATIQUE CANADA



A

10
4
8

B

9+
4
4

C

9+
2 1 6
9 8.4 1
4 4 4

D

9
1
X

E

9
8 1
4 1
4 X

F

9
6 3
4 1
4 X

G

9
4 5
4 1
4 X

H

9
2 7
4 1
4 X

Local Drift Next 24h
Derive Locale Prochain 24h

