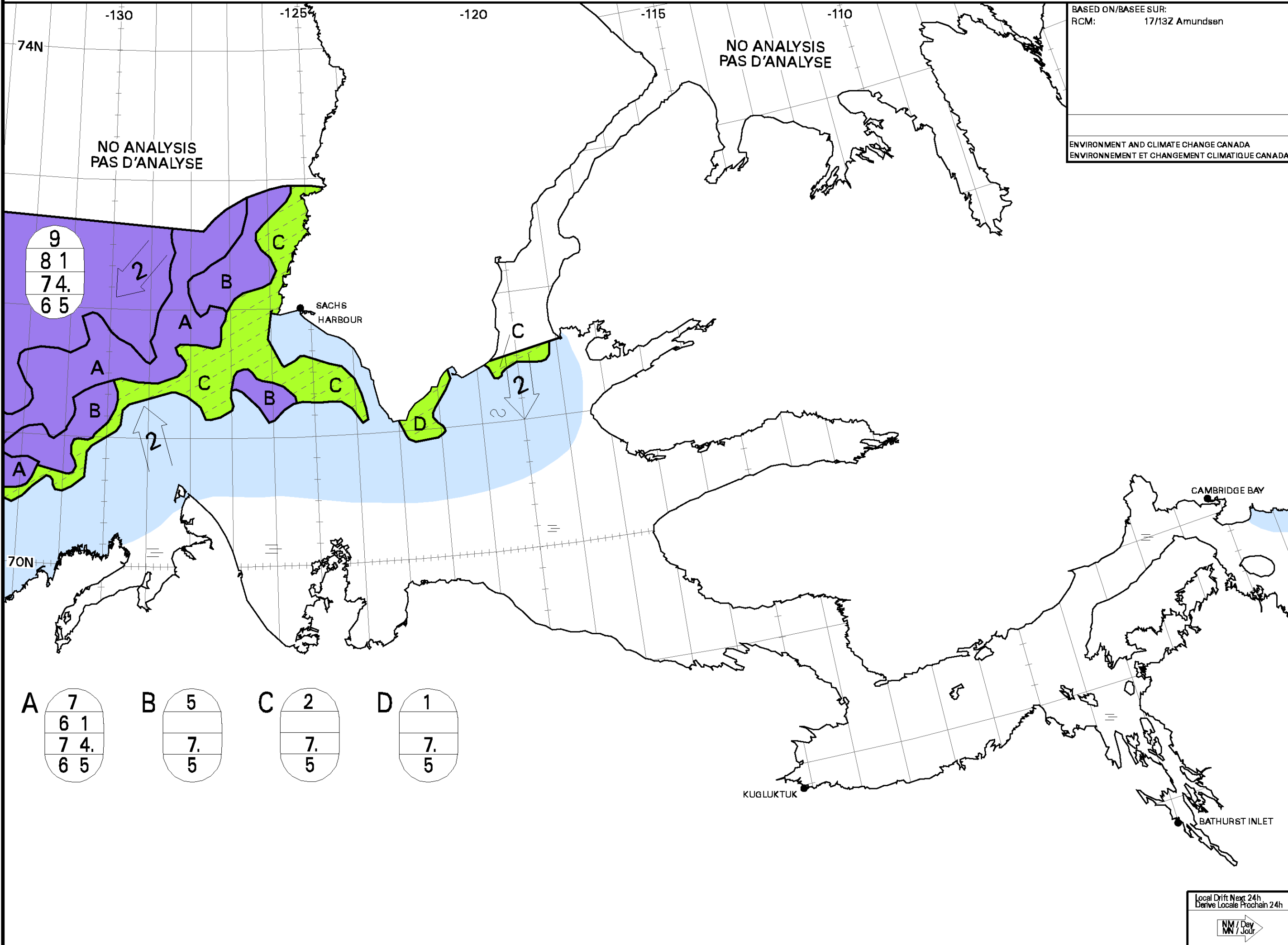


BASED ON/BASEE SUR:
RCM: 17/13Z Amundsen

ENVIRONMENT AND CLIMATE CHANGE CANADA
ENVIRONNEMENT ET CHANGEMENT CLIMATIQUE CANADA



NO ANALYSIS
PAS D'ANALYSE

NO ANALYSIS
PAS D'ANALYSE

9
81
74.
65

SACHS
HARBOUR

CAMBRIDGE BAY

KUGLUKTUK

BATHURST INLET

A	7
	61
	74.
	65

B	5
	7.
	5

C	2
	7.
	5

D	1
	7.
	5

Local Drift Next 24h
Derive Locale Prochain 24h

NW / Jour