

Approches to Resolute
Resolute et ses abords

V 1800 Z
23 AUG/AOÛ 2023

Based On/Basée sur:
 RCM 23/13Z Norwegian
 23/12Z Baffin
 SENTINEL-1 23/13Z Norwegian
 Ship/Navire 23/15Z CGSB #083
 23/14Z CGDX #017
 Ship/Navire 23/13Z CGHL #031

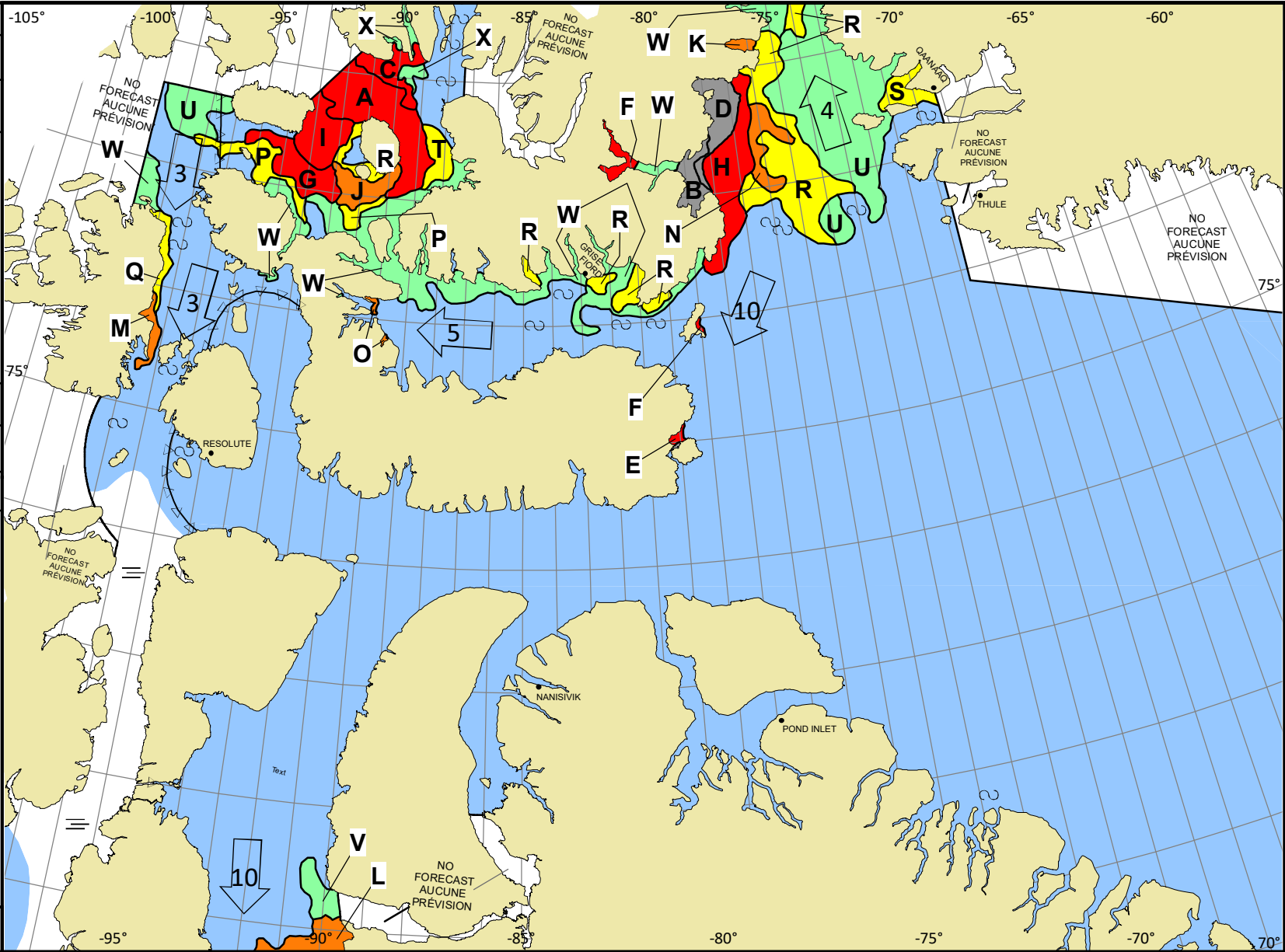
ICE WARNING IN EFFECT
AVERTISSEMENT DE GLACE EN VIGUEUR

© 2023 CANADIAN ICE SERVICE
 SERVICE CANADIEN DES GLACES
 Environment and Environment et
 Climate Change Canada Changement climatique Canada

WMO Colour Code - Concentration
 Code de couleurs de l'OMM - Concentration

- Ice free
Libre de glace
- <1/10
- 1-3/10
- 4-6/10
- 7-8/10
- 9-10/10
- Fast ice
Banquise côtière
- Undefined
Indéterminée
- New
Nouvelle
- Nilas/grey
Nilas/grise

NM/Day Local Drift Next 24h
MN/Jour Dérive Locale Prochain 24h



A	$\begin{matrix} 9+ \\ \hline 4 \cdot \\ \hline 6 \end{matrix}$	B	$\begin{matrix} 9+ \\ \hline 7 \cdot \\ \hline 8 \end{matrix}$	C	$\begin{matrix} 9+ \\ \hline 4 \cdot \\ \hline 6 \end{matrix}$	D	$\begin{matrix} 9+ \\ \hline 5 \ 5 \\ \hline 7 \ 4 \cdot \\ \hline 5 \ 8 \end{matrix}$	E	$\begin{matrix} 9 \\ \hline 4 \cdot \\ \hline 6 \end{matrix}$	F	$\begin{matrix} 9 \\ \hline 7 \cdot \\ \hline 6 \end{matrix}$	G	$\begin{matrix} 9 \\ \hline 8 \ 1 \\ \hline 7 \ 4 \cdot \\ \hline 6 \ 5 \end{matrix}$	H	$\begin{matrix} 9 \\ \hline 5 \ 3 \ 1 \\ \hline 7 \ 4 \ 1 \cdot \\ \hline 6 \ 5 \ 5 \end{matrix}$	I	$\begin{matrix} 9 \\ \hline 4 \ 5 \\ \hline 7 \ 4 \cdot \\ \hline 6 \ 5 \end{matrix}$	J	$\begin{matrix} 8 \\ \hline 7 \ 1 \\ \hline 7 \ 4 \cdot \\ \hline 6 \ 5 \end{matrix}$	K	$\begin{matrix} 8 \\ \hline 1 \ 7 \\ \hline 7 \ 4 \cdot \\ \hline 5 \ 6 \end{matrix}$	L	$\begin{matrix} 7 \\ \hline 4 \cdot \\ \hline 4 \end{matrix}$	M	$\begin{matrix} 7 \\ \hline 6 \ 1 \\ \hline 7 \ 4 \cdot \\ \hline 4 \ 4 \end{matrix}$	N	$\begin{matrix} 7 \\ \hline 5 \ 1 \ 1 \\ \hline 7 \ 4 \ 1 \cdot \\ \hline 6 \ 5 \ 5 \end{matrix}$
O	$\begin{matrix} 7 \\ \hline 2 \ 5 \\ \hline 7 \ 4 \cdot \\ \hline 5 \ 4 \end{matrix}$	P	$\begin{matrix} 5 \\ \hline 7 \cdot \\ \hline 5 \end{matrix}$	Q	$\begin{matrix} 5 \\ \hline 7 \cdot \\ \hline 4 \end{matrix}$	R	$\begin{matrix} 5 \\ \hline 4 \ 1 \\ \hline 7 \ 4 \cdot \\ \hline 6 \ 5 \end{matrix}$	S	$\begin{matrix} 5 \\ \hline 3 \ 2 \\ \hline 7 \ 4 \cdot \\ \hline 6 \ 5 \end{matrix}$	T	$\begin{matrix} 5 \\ \hline 1 \ 4 \\ \hline 7 \ 4 \cdot \\ \hline 5 \ 4 \end{matrix}$	U	$\begin{matrix} 3 \\ \hline 2 \ 1 \\ \hline 7 \ 4 \cdot \\ \hline 5 \ 4 \end{matrix}$	V	$\begin{matrix} 2 \\ \hline 4 \cdot \\ \hline 3 \end{matrix}$	W	$\begin{matrix} 2 \\ \hline 7 \cdot \\ \hline 4 \end{matrix}$	X	$\begin{matrix} 2 \\ \hline 4 \cdot \\ \hline 4 \end{matrix}$								