

Approaches to Resolute  
Resolute et ses abords

V 1800 Z  
19 AUG/AOÛ 2023

Based On/Basée sur:  
SENTINEL-1 19/12Z N AND/ET E  
RCM 19/12Z JONES  
RCM 19/13Z RESOLUTE  
RCM 18/23Z SW/SO

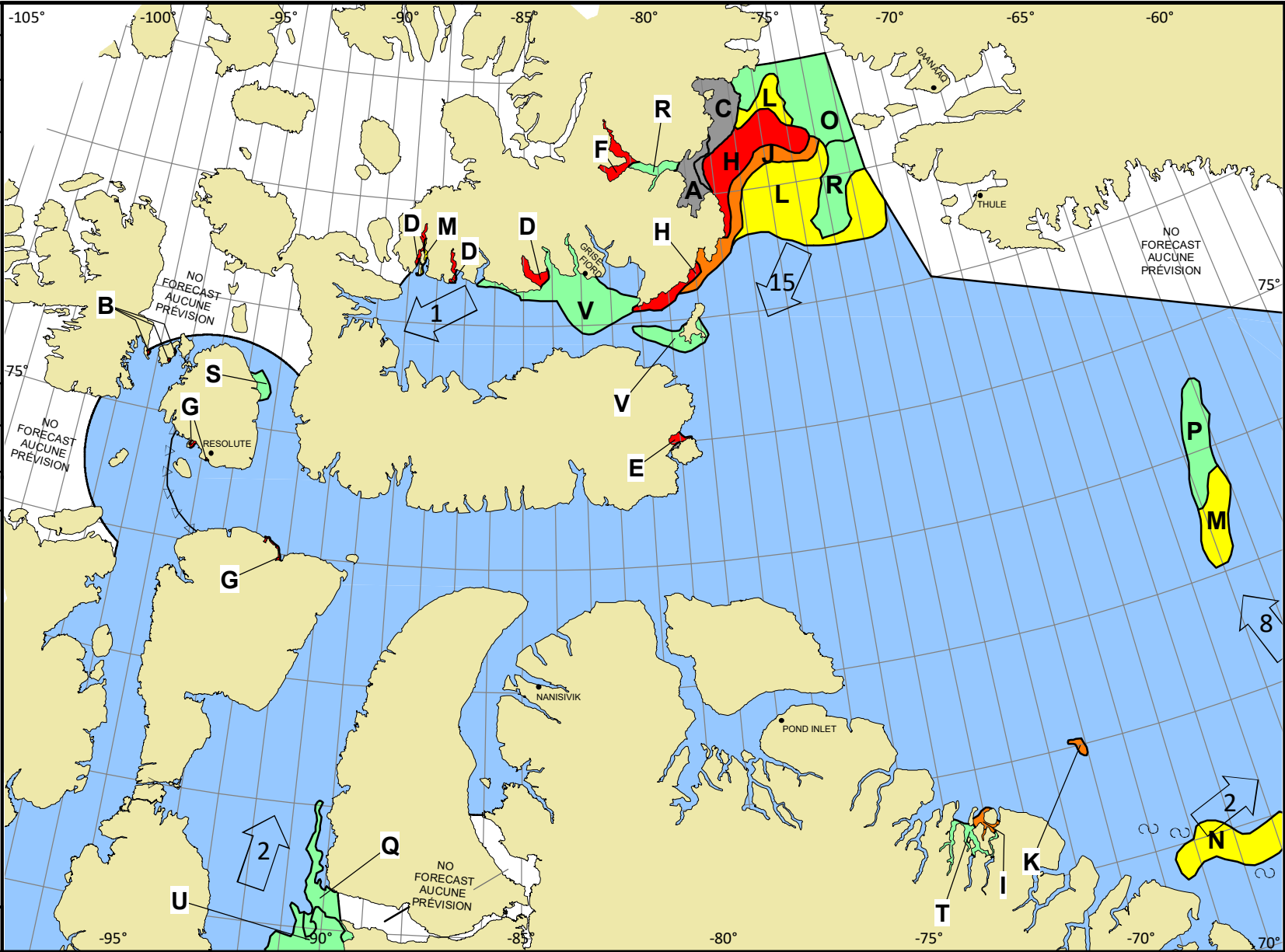
ICE WARNING IN EFFECT  
AVERTISSEMENT DE GLACE EN VIGUEUR

© 2023 CANADIAN ICE SERVICE  
SERVICE CANADIEN DES GLACES  
Environment and Climate Change Canada  
Environnement et Changement climatique Canada

WMO Colour Code - Concentration  
Code de couleurs de l'OMM - Concentration

- Ice free  
Libre de glace
- <1/10
- 1-3/10
- 4-6/10
- 7-8/10
- 9-10/10
- Fast ice  
Banquise côtière
- Undefined  
Indéterminée
- New  
Nouvelle
- Nilas/grey  
Nilas/grise

NM/Day MNI/Jour Local Drift Next 24h  
Dérive Locale Prochain 24h



|   |  |   |   |   |   |   |   |   |                            |   |                          |   |                          |   |  |   |                          |   |  |   |  |   |  |   |  |   |  |
|---|--|---|---|---|---|---|---|---|----------------------------|---|--------------------------|---|--------------------------|---|--|---|--------------------------|---|--|---|--|---|--|---|--|---|--|
| A | $\frac{9+}{7 \cdot}$<br>8                                    | B | $\frac{9+}{8 \cdot 2}$<br>$\frac{7 \cdot 4 \cdot}{4 \cdot 4}$ | C | $\frac{9+}{5 \cdot 5}$<br>$\frac{7 \cdot 4 \cdot}{5 \cdot 8}$ | D | $\frac{9+}{4 \cdot 6}$<br>$\frac{7 \cdot 4 \cdot}{5 \cdot 5}$ | E | $\frac{9}{7 \cdot}$<br>6   | F | $\frac{9}{7 \cdot}$<br>6 | G | $\frac{9}{4 \cdot}$<br>4 | H | $\frac{9}{5 \cdot 3 \cdot 1}$<br>$\frac{7 \cdot 4 \cdot 1 \cdot}{6 \cdot 5 \cdot 5}$ | I | $\frac{7}{4 \cdot}$<br>5 | J | $\frac{7}{5 \cdot 1 \cdot 1}$<br>$\frac{7 \cdot 4 \cdot 1 \cdot}{6 \cdot 5 \cdot 5}$ | K | $\frac{7}{2 \cdot 5}$<br>$\frac{7 \cdot 4 \cdot}{4 \cdot 3}$ | L | $\frac{5}{4 \cdot 1}$<br>$\frac{7 \cdot 4 \cdot}{6 \cdot 5}$ | M | $\frac{5}{3 \cdot 2}$<br>$\frac{7 \cdot 4 \cdot}{3 \cdot 3}$ | N | $\frac{5}{1 \cdot 4}$<br>$\frac{7 \cdot 4 \cdot}{3 \cdot 3}$ |
| O | $\frac{3}{2 \cdot 1}$<br>$\frac{7 \cdot 4 \cdot}{5 \cdot 4}$ | P | $\frac{3}{2 \cdot 1}$<br>$\frac{7 \cdot 4 \cdot}{3 \cdot 3}$  | Q | $\frac{2}{7 \cdot}$<br>3                                      | R | $\frac{2}{7 \cdot}$<br>5                                      | S | $\frac{2}{7 \cdot}$<br>~9+ | T | $\frac{2}{4 \cdot}$<br>4 | U | $\frac{2}{4 \cdot}$<br>3 | V | $\frac{1}{7 \cdot}$<br>~9+   |   |                          |   |  |   |  |   |  |   |  |   |  |