

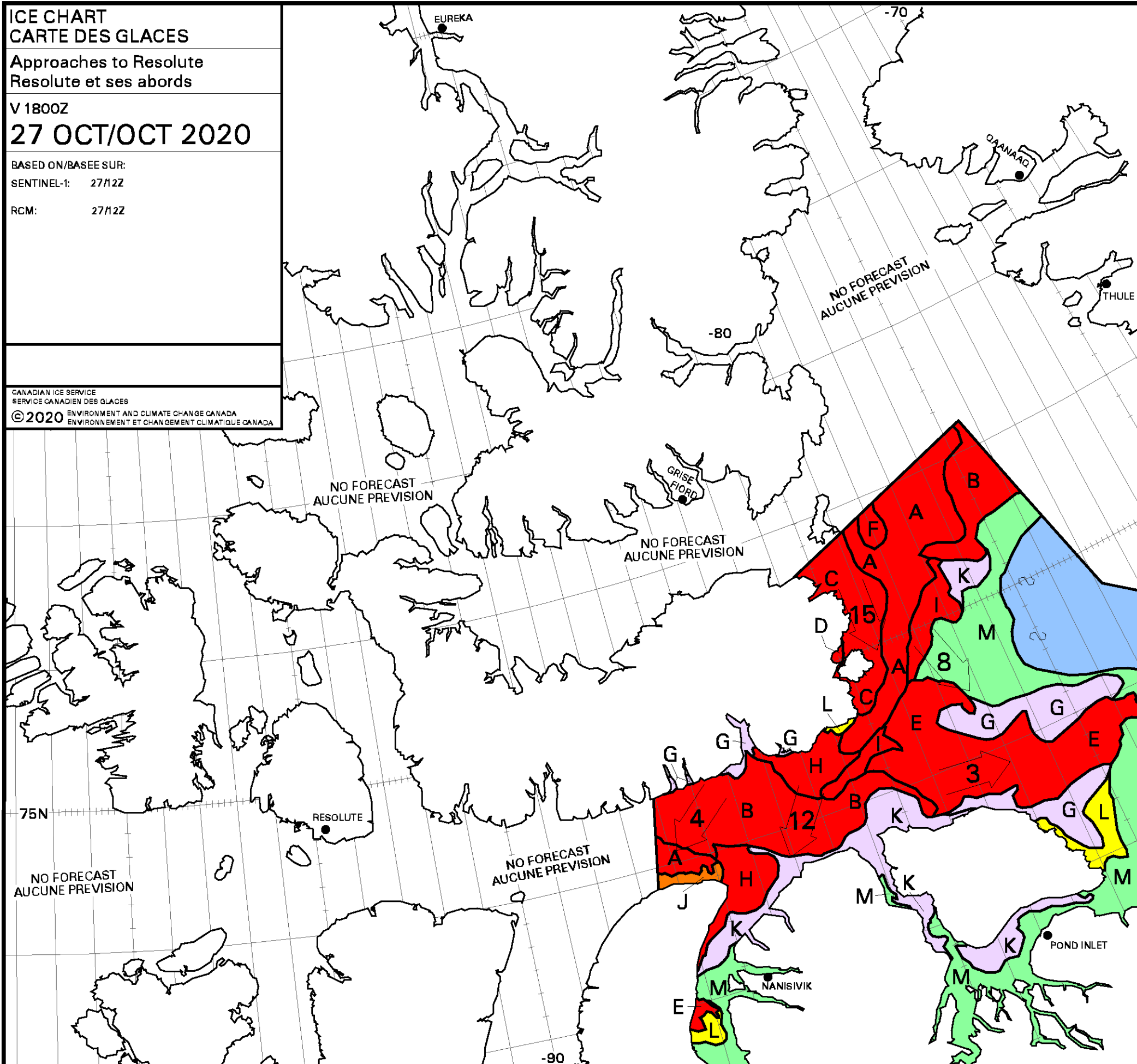
**ICE CHART**  
**CARTE DES GLACES**

Approaches to Resolute  
 Resolute et ses abords

V 1800Z  
**27 OCT/OCT 2020**

BASED ON/BASEE SUR:  
 SENTINEL-1: 27/12Z  
 RCM: 27/12Z

CANADIAN ICE SERVICE  
 SERVICE CANADIEN DES GLACES  
 © 2020 ENVIRONMENT AND CLIMATE CHANGE CANADA  
 ENVIRONNEMENT ET CHANGEMENT CLIMATIQUE CANADA



<b>A</b>	9+	<b>B</b>	9+
	9 1		7 3
9.	4 1	9.	4 1
	4 X		4 X
<b>C</b>	9+	<b>D</b>	9+
	6 4		3 7
9.	4 1	9.	4 1
	4 X		4 X
<b>E</b>	9+	<b>F</b>	9+
	3 7		2 6 2
9.	4 1	9.	9.5 4
	4 X		5 5 4
<b>G</b>	9	<b>H</b>	9
	1		5 4
	X		4 1
			4 X
<b>I</b>	9	<b>J</b>	8
	2 7		2 4 2
9.	4 1	9.	5 4 1
	4 X		4 4 X
<b>K</b>	7	<b>L</b>	5
	1		1
	X		X
<b>M</b>	2		
	1		
	X		

WMO Colour Code - Concentration

	Ice Free Libre de glace		1-3/10		7-8/10
	< 1/10		4-6/10		9-10/10

Code de couleurs de l'OMM - Concentration

	Fast Ice Banquise côtière		New Ice Nouvelle glace
	Undefined Indéterminée		Nilas/Grey Ice Nilas/glace grise

Local Drift Next 24h  
 Derive Locale Prochain 24h