

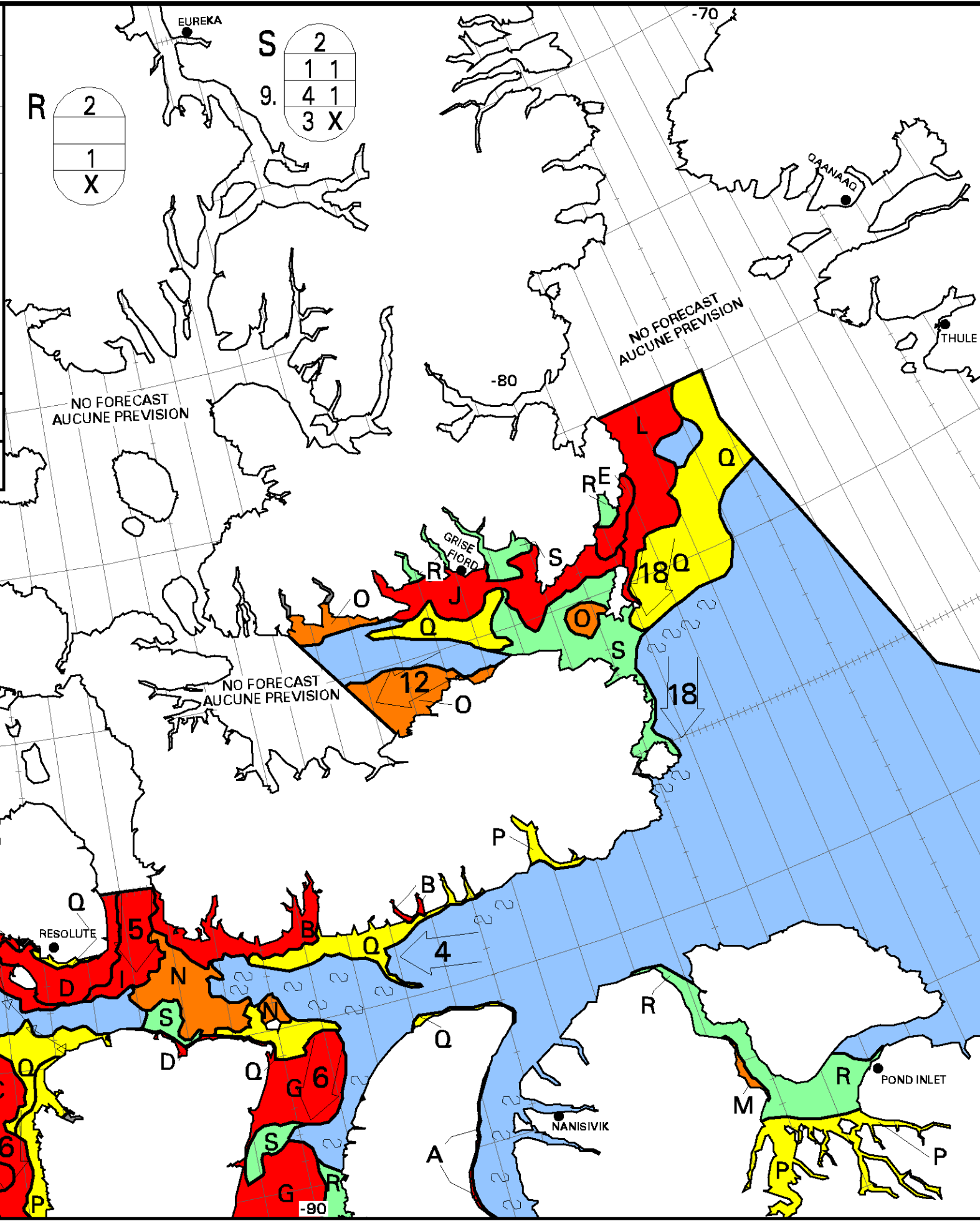
ICE CHART
CARTE DES GLACES

Approaches to Resolute
 Resolute et ses abords

V 1800Z
17 OCT/OCT 2020

BASED ON/BASEE SUR:
 RCM: 17/13Z
 SENTINEL-1: 17/13Z
 MODIS: 17/17Z
 M cloud/generalement nuageux

CANADIAN ICE SERVICE
 SERVICE CANADIEN DES GLACES
 ENVIRONMENT AND CLIMATE CHANGE CANADA
 ENVIRONNEMENT ET CHANGEMENT CLIMATIQUE CANADA
 © 2020



A 9+ 9 1 9. 4 1 4 X	B 9+ 9 1 4 1 4 X
C 9+ 5 4 1 9. 5 4 1 5 4 X	D 9+ 3 2 4 9 8.5 1 5 4 3
E 9+ 2 7 1 9. 5 4 1 4 4 X	F 9+ 2 2 4 9 8.5 4 5 4 3
G 9+ 1 1 6 9 8.4 1 5 4 3	H 9+ 1 1 4 9 8.5 4 5 4 3
I 9 4 4	J 9 8 1 4 1 4 X
K 9 5 4 9. 4 1 4 X	L 9 2 6 1 9. 5 4 1 4 4 X
M 8 3 5 9. 4 1 4 X	N 8 1 1 4 9 8.4 1 5 4 3
O 7 5 2 9. 4 1 4 X	P 5 1 X
Q 4 2 2 9. 4 1 4 X	

Local Drift Next 24h
 Derive Locale Prochain 24h

WMO Colour Code - Concentration

Ice Free Libre de glace	1-3/10	7-8/10
< 1/10	4-6/10	9-10/10

Code de couleurs de l'OMM - Concentration

Fast Ice Banquise côtière	New Ice Nouvelle glace
Undefined Indéterminée	Nilas/Grey Ice Nilas/glace grise