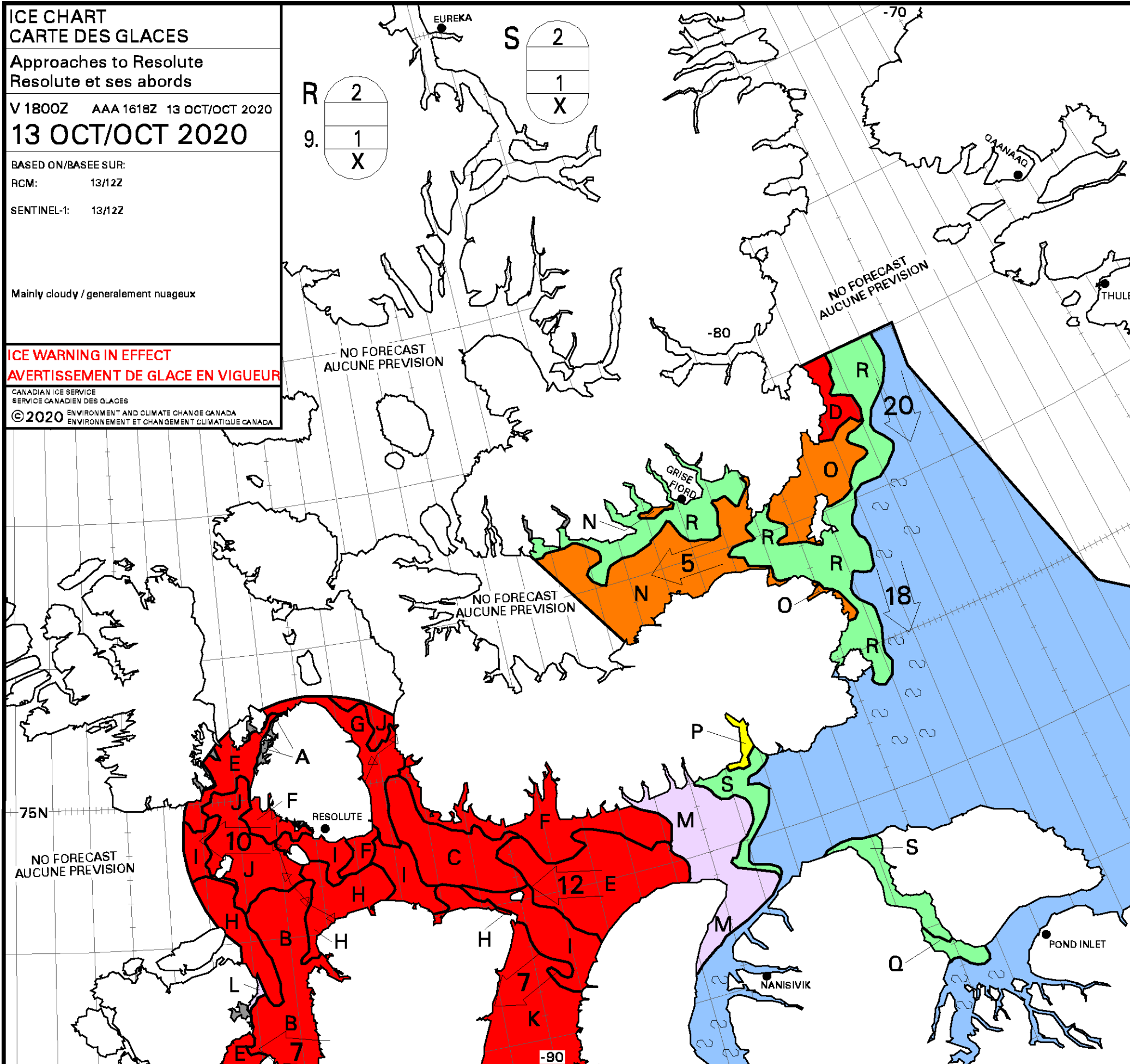


**ICE CHART**  
**CARTE DES GLACES**  
 Approaches to Resolute  
 Resolute et ses abords  
 V 1800Z AAA 1618Z 13 OCT/OCT 2020  
**13 OCT/OCT 2020**  
 BASED ON/BASEE SUR:  
 RCM: 13/12Z  
 SENTINEL-1: 13/12Z  
 Mainly cloudy / generalement nuageux

**ICE WARNING IN EFFECT**  
**AVERTISSEMENT DE GLACE EN VIGUEUR**  
 CANADIAN ICE SERVICE  
 SERVICE CANADIEN DES GLACES  
 © 2020 ENVIRONMENT AND CLIMATE CHANGE CANADA  
 ENVIRONNEMENT ET CHANGEMENT CLIMATIQUE CANADA



<b>A</b> 10 5 3 2 9 8.4 5 4 8	<b>B</b> 9+ 9 1 4 1 4 X
<b>C</b> 9+ 8 2 4 1 4 X	<b>D</b> 9+ 7 3 4 1 4 X
<b>E</b> 9+ 4 6 4 1 4 X	<b>F</b> 9+ 4 6 4 1 4 X
<b>G</b> 9+ 3 3 2 9 8.5 4 5 5 4	<b>H</b> 9+ 3 2 4 9 8.4 1 5 4 3
<b>I</b> 9+ 2 1 5 9 8.4 1 5 4 3	<b>J</b> 9+ 1 1 6 9 8.4 1 5 4 3
<b>K</b> 9 1 1 3 9 8.4 1 5 4 3	<b>L</b> 8 1 X
<b>M</b> 8 1 X	<b>N</b> 8 7 1 4 1 4 X
<b>O</b> 7 3 4 4 1 4 X	<b>P</b> 4 1 X
<b>Q</b> 3 2 1 4 1 4 X	

Local Drift Next 24h  
 Derive Locale Prochain 24h

WMO Colour Code - Concentration

Ice Free Libre de glace	1-3/10	7-8/10
< 1/10	4-6/10	9-10/10

Code de couleurs de l'OMM - Concentration

Fast Ice Banquise côtière	New Ice Nouvelle glace
Undefined Indéterminée	Nilas/Grey Ice Nilas/glace grise