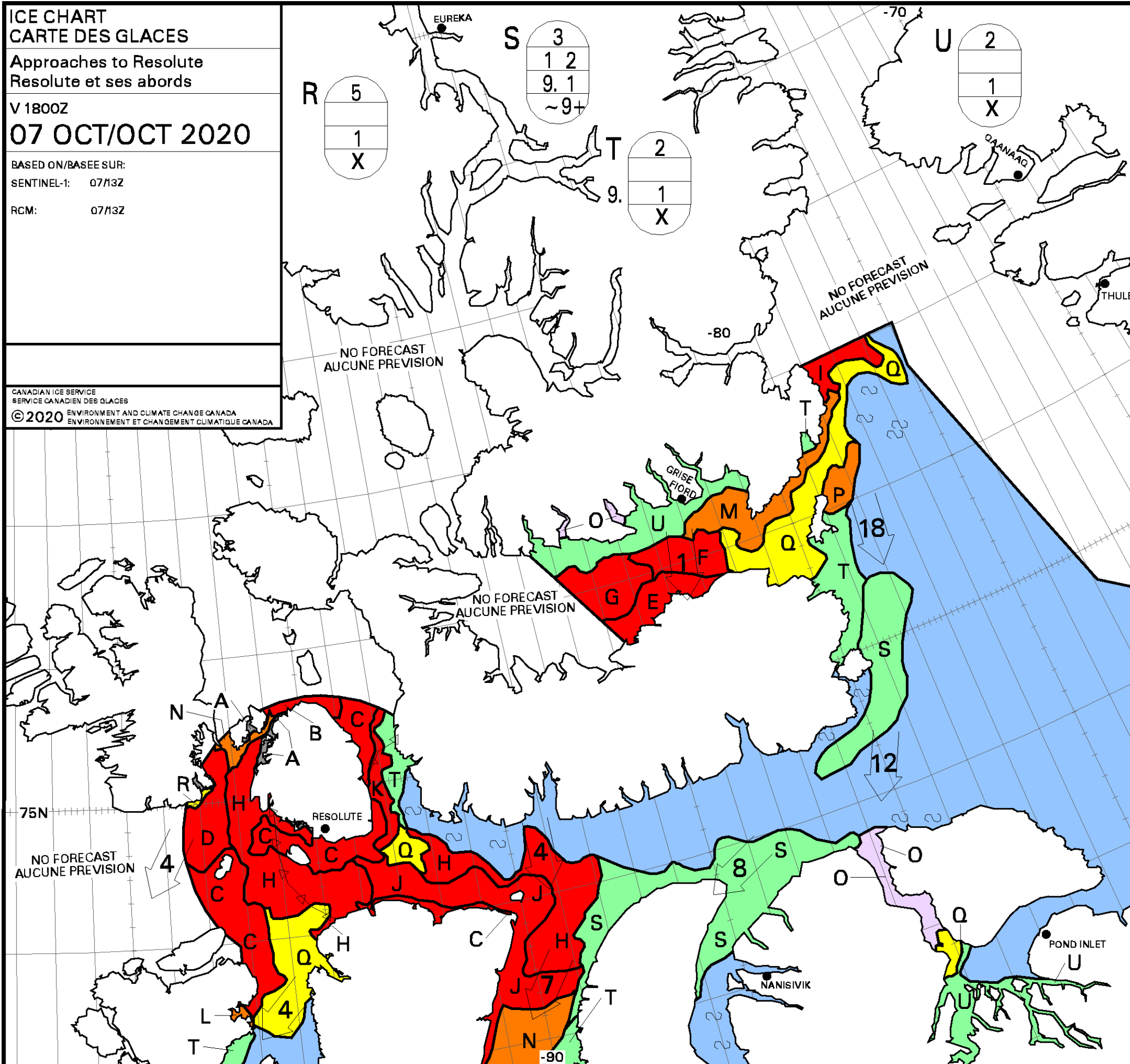


**ICE CHART**  
**CARTE DES GLACES**  
 Approaches to Resolute  
 Resolute et ses abords  
 V 1800Z  
**07 OCT/OCT 2020**  
 BASED ON/BASEE SUR:  
 SENTINEL-1: 07/13Z  
 RCM: 07/13Z

CANADIAN ICE SERVICE  
 SERVICE CANADIEN DES GLACES  
 © 2020 ENVIRONMENT AND CLIMATE CHANGE CANADA  
 ENVIRONNEMENT ET CHANGEMENT CLIMATIQUE CANADA



<b>A</b> 10 5 3 2 9 8.4 5 4 8	<b>B</b> 9+ 5 4 1 9 8.1 4 4 X
<b>C</b> 9+ 3 2 4 9 8.4 5 4 3	<b>D</b> 9+ 2 1 4 9 8.4 5 4 3
<b>E</b> 9+ 1 7 2 9.4 1 4 4 X	<b>F</b> 9 7 2 9. 4 1 4 X
<b>G</b> 9 7 2 4 1 4 X	<b>H</b> 9 2 7 9. 4 1 4 X
<b>I</b> 9 2 4 3 7.4 1 4 4 X	<b>J</b> 9 2 1 2 9 8.4 5 4 3
<b>K</b> 9 1 1 6 9 8.4 5 4 3	<b>L</b> 8 2 1 4 9 8.4 5 4 3
<b>M</b> 8 1 7 9.1 3 X	<b>N</b> 8 1 1 2 9 8.4 5 4 3
<b>O</b> 7 1 X	<b>P</b> 7 2 5 9.1 3 X
<b>Q</b> 5 9. 1 X	

Local Drift Next 24h  
 Derive Locale Prochain 24h

WMO Colour Code - Concentration

Ice Free Libre de glace	1-3/10	7-8/10
< 1/10	4-6/10	9-10/10

Code de couleurs de l'OMM - Concentration

Fast Ice Banquise côtière	New Ice Nouvelle glace
Undefined Indéterminée	Nilas/Grey Ice Nilas/glace grise