

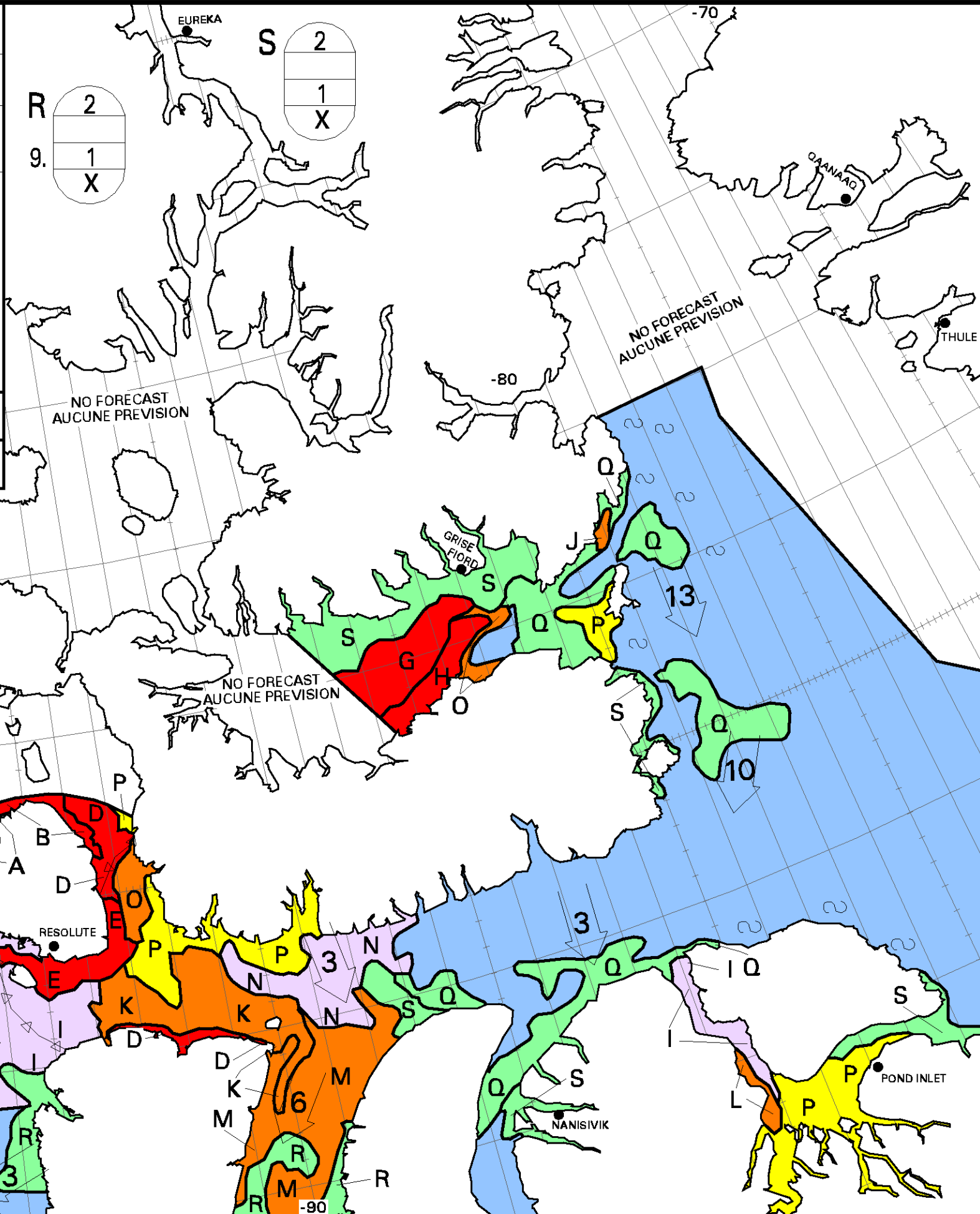
ICE CHART
CARTE DES GLACES

Approaches to Resolute
 Resolute et ses abords

V 1800Z
05 OCT/OCT 2020

BASED ON/BASÉ SUR:
 SENTINEL-1: 05/13Z W of/ouest de
 SENTINEL-1: 05/12Z E of/de 8930W
 W of/ouest de 80W

CANADIAN ICE SERVICE
 SERVICE CANADIEN DES GLACES
 © 2020 ENVIRONMENT AND CLIMATE CHANGE CANADA
 ENVIRONNEMENT ET CHANGEMENT CLIMATIQUE CANADA



A 10 5 3 2 9 8.4 5 4 8	B 9+ 4 5 1 9 8.1 4 4 X
C 9+ 3 2 4 9 8.4 5 4 3	D 9+ 2 1 4 9 8.4 5 4 3
E 9 3 5 1 9 8.1 6 4 X	F 9 2 7 4 1 4 X
G 9 1 8 4 1 4 X	H 9 1 3 5 9.4 1 4 4 X
I 8 9. 1 X	J 8 3 5 9.1 3 X
K 8 2 1 4 9 8.4 5 4 3	L 8 1 7 9.1 3 X
M 8 1 1 2 9 8.4 5 4 3	N 7 1 X
O 7 1 6 9. 4 1 4 X	P 5 1 X
Q 3 1 2 9. 1 ~9+	

Local Drift Next 24h
 Derive Locale Prochain 24h

WMO Colour Code - Concentration

Ice Free Libre de glace	1-3/10	7-8/10
< 1/10	4-6/10	9-10/10

Code de couleurs de l'OMM - Concentration

Fast Ice Banquise côtière	New Ice Nouvelle glace
Undefined Indéterminée	Nilas/Grey Ice Nilas/glace grise