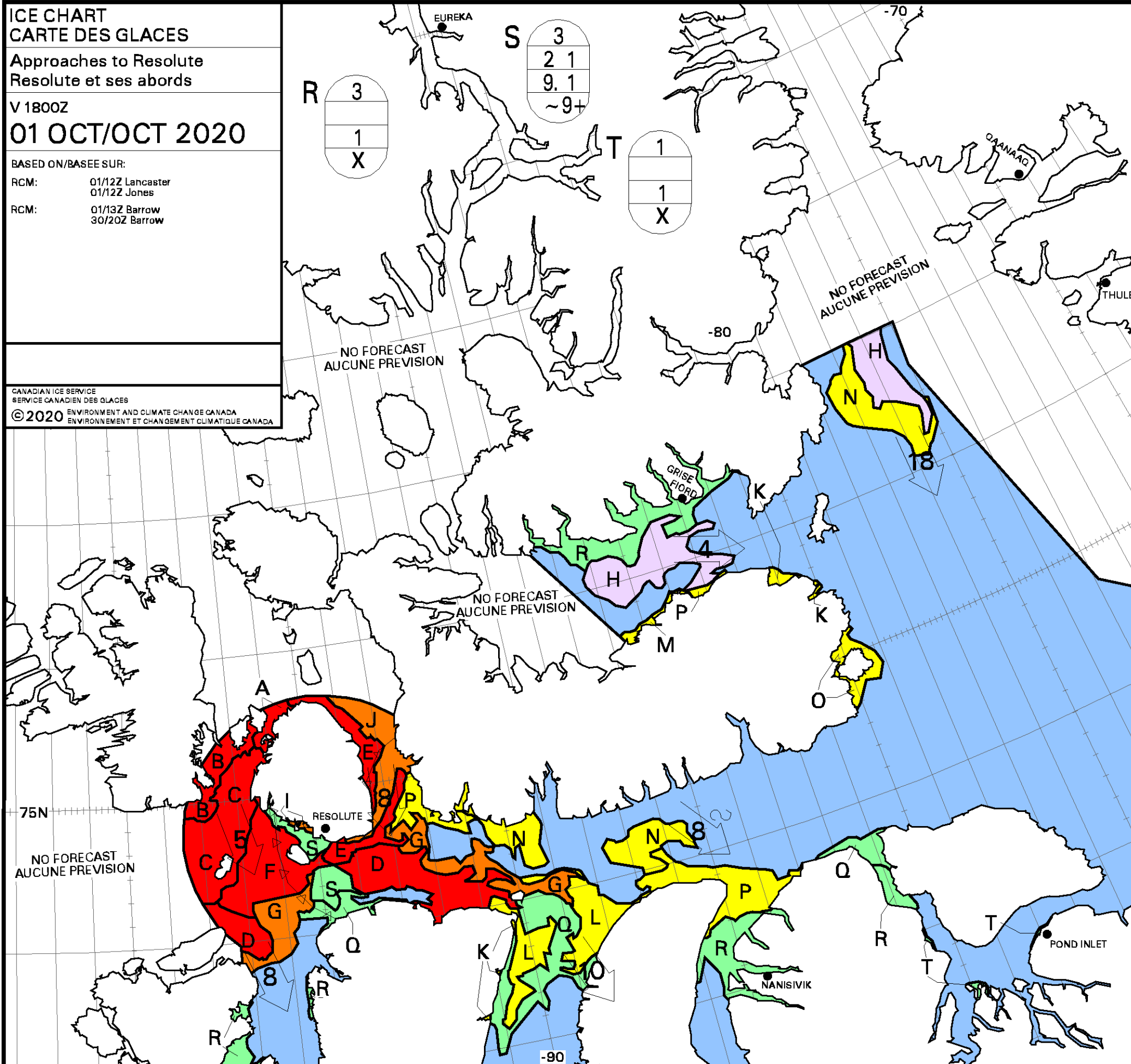


ICE CHART
CARTE DES GLACES
 Approaches to Resolute
 Resolute et ses abords
 V 1800Z
01 OCT/OCT 2020

BASED ON/BASÉ SUR:
 RCM: 01/12Z Lancaster
 01/12Z Jones
 RCM: 01/13Z Barrow
 30/20Z Barrow

CANADIAN ICE SERVICE
 SERVICE CANADIEN DES GLACES
 © 2020 ENVIRONMENT AND CLIMATE CHANGE CANADA
 ENVIRONNEMENT ET CHANGEMENT CLIMATIQUE CANADA



A 9+ 5 3 2 9 8.4 5 4 4	B 9+ 3 7 9. 4 4 4
C 9+ 3 2 4 9 8.4 5 4 4	D 9+ 2 1 5 9 8.4 4 4 3
E 9 3 5 1 9 8.1 6 4 X	F 9 3 2 4 9 8.4 5 4 3
G 8 2 1 4 9 8.4 5 4 3	H 7 9. 1 X
I 7 2 1 4 9 8.4 5 4 4	J 7 1 4 2 9. 4 1 3 3 X
K 6 1 X	L 6 1 1 2 9 8.4 5 4 3
M 5 3 2 9. 1 3 X	N 4 9. 1 X
O 4 1 X	P 4 1 3 9. 1 ~9+
Q 3 9. 1 X	

Local Drift Next 24h
 Derive Locale Prochain 24h

WMO Colour Code - Concentration

Ice Free Libre de glace	1-3/10	7-8/10
< 1/10	4-6/10	9-10/10

Code de couleurs de l'OMM - Concentration

Fast Ice Banquise côtière	New Ice Nouvelle glace
Undefined Indéterminée	Nilas/Grey Ice Nilas/glace grise