

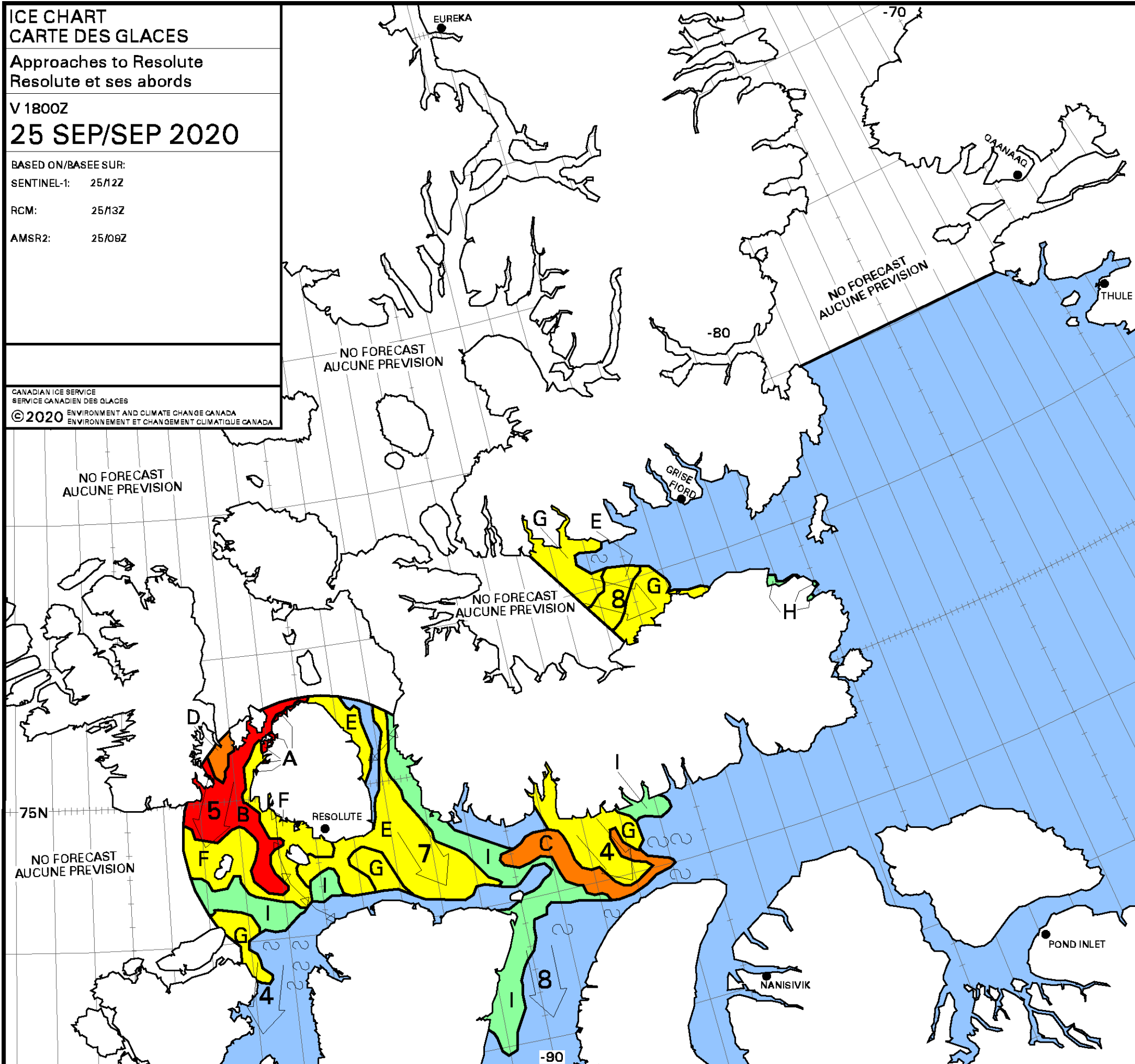
**ICE CHART**  
**CARTE DES GLACES**

Approaches to Resolute  
 Resolute et ses abords

V 1800Z  
**25 SEP/SEP 2020**

BASED ON/BASEE SUR:  
 SENTINEL-1: 25/12Z  
 RCM: 25/13Z  
 AMSR2: 25/09Z

CANADIAN ICE SERVICE  
 SERVICE CANADIEN DES GLACES  
 © 2020 ENVIRONMENT AND CLIMATE CHANGE CANADA  
 ENVIRONNEMENT ET CHANGEMENT CLIMATIQUE CANADA



<b>A</b>	9+	<b>B</b>	9
	5 3 2		3 2 4
	7 4.1		7 4.1
	5 4 X		5 4 X
<b>C</b>	8	<b>D</b>	8
	3 2 3		2 1 5
	7 4.1		7 4.1
	5 4 X		5 4 X
<b>E</b>	6	<b>F</b>	6
	2 2 2		2 1 3
	7 4.1		7 4.1
	5 4 X		4 4 X
<b>G</b>	4	<b>H</b>	2
	1 3		1
	7.1		X
	4 X		
<b>I</b>	2		
	1 1		
	7.1		
	~9+		

Local Drift Next 24h  
 Derive Locale Prochain 24h

WMO Colour Code - Concentration

	Ice Free Libre de glace		1-3/10		7-8/10
	< 1/10		4-6/10		9-10/10

Code de couleurs de l'OMM - Concentration

	Fast Ice Banquise côtière		New Ice Nouvelle glace
	Undefined Indéterminée		Nilas/Grey Ice Nilas/glace grise