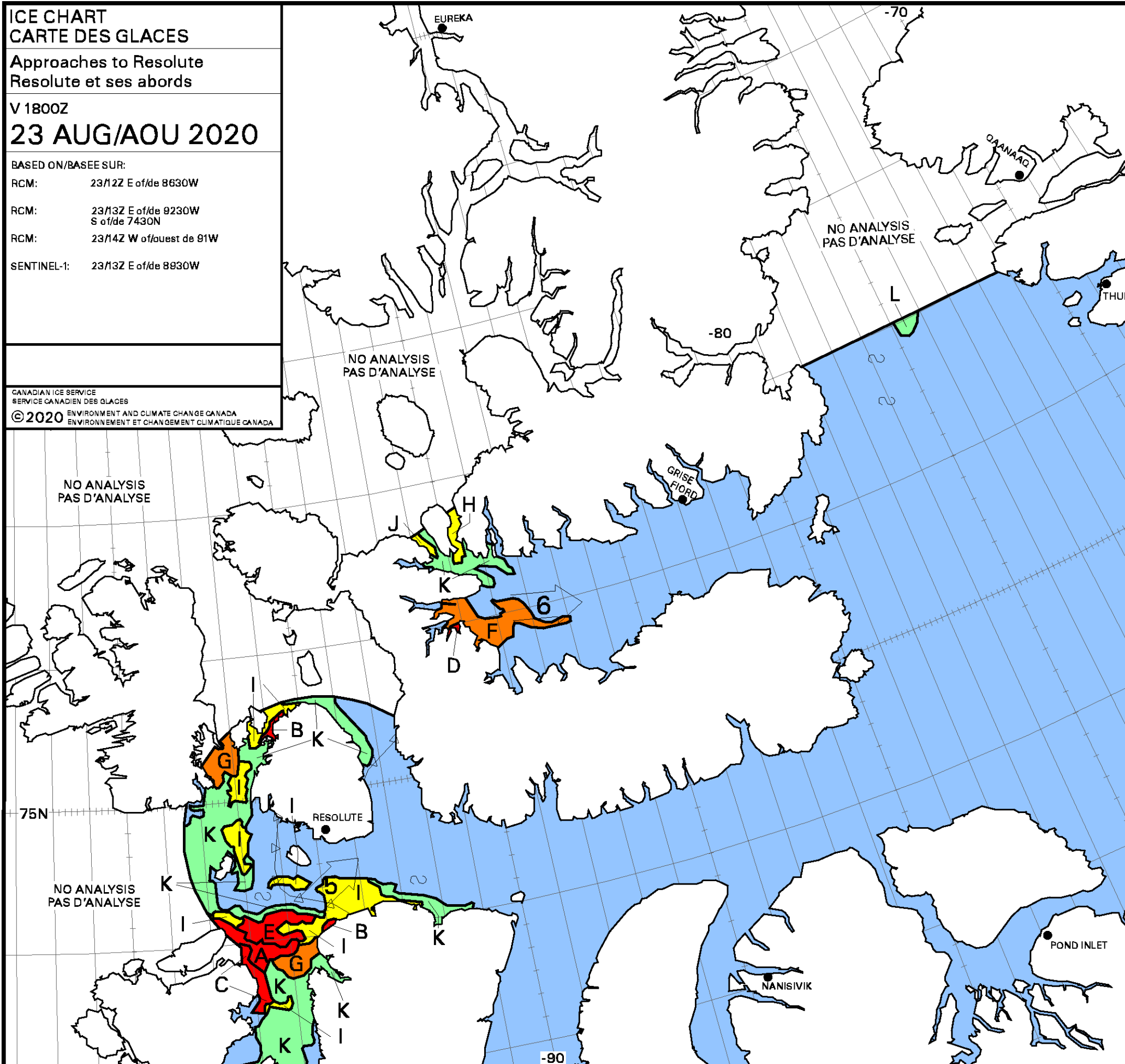


ICE CHART
CARTE DES GLACES
 Approaches to Resolute
 Resolute et ses abords
 V 1800Z
23 AUG/AOU 2020

BASED ON/BASÉ SUR:
 RCM: 23/12Z E of/de 8630W
 RCM: 23/13Z E of/de 9230W
 S of/de 7430N
 RCM: 23/14Z W of/ouest de 91W
 SENTINEL-1: 23/13Z E of/de 8830W

CANADIAN ICE SERVICE
 SERVICE CANADIEN DES GLACES
 © 2020 ENVIRONMENT AND CLIMATE CHANGE CANADA
 ENVIRONNEMENT ET CHANGEMENT CLIMATIQUE CANADA



A 9+ 4 6 7 4. 6 5	B 9+ 3 7 7 4. 5 4
C 9+ 2 8 7 4. 5 4	D 9 7 4. 3
E 9 2 7 7 4. 5 4	F 7 7 4. 3
G 7 2 5 7 4. 5 5	H 5 7 4. 5
I 5 2 3 7 4. 5 5	J 5 1 4 7 4. 3 3
K 2 1 1 7 4. 3 3	L 1 7. 3

Local Drift Next 24h
 Derive Locale Prochain 24h

WMO Colour Code - Concentration

Ice Free Libre de glace	1-3/10	7-8/10
< 1/10	4-6/10	9-10/10

Code de couleurs de l'OMM - Concentration

Fast Ice Banquise côtière	New Ice Nouvelle glace
Undefined Indéterminée	Nilas/Grey Ice Nilas/glace grise