

**ICE CHART**  
**CARTE DES GLACES**

Approaches to Resolute  
 Resolute et ses abords

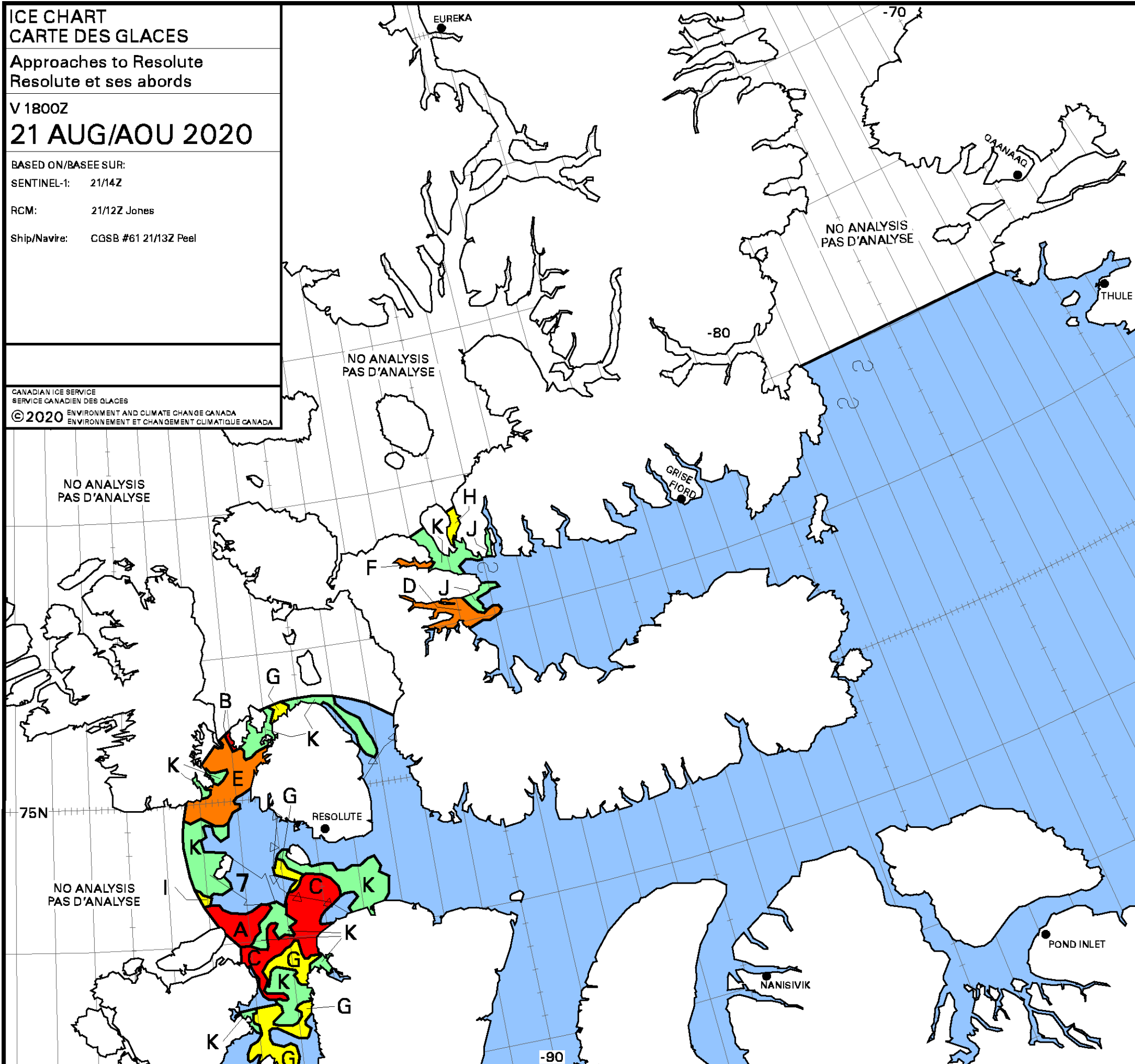
V 1800Z  
**21 AUG/AOU 2020**

BASED ON/BASÉ SUR:  
 SENTINEL-1: 21/14Z

RCM: 21/12Z Jones

Ship/Navire: CGSB #61 21/13Z Peel

CANADIAN ICE SERVICE  
 SERVICE CANADIEN DES GLACES  
 ENVIRONMENT AND CLIMATE CHANGE CANADA  
 ENVIRONNEMENT ET CHANGEMENT CLIMATIQUE CANADA  
 © 2020



<b>A</b>	9 4 5 7 4. 6 5	<b>B</b>	9 3 6 7 4. 6 5
<b>C</b>	9 2 7 7 4. 6 5	<b>D</b>	8 7 4. 5
<b>E</b>	8 2 6 7 4. 6 5	<b>F</b>	8 1 7 7 4. 5 5
<b>G</b>	6 2 4 7 4. 5 5	<b>H</b>	5 7 4. 5
<b>I</b>	5 3 2 7 4. 6 5	<b>J</b>	2 7 4. 5
<b>K</b>	2 1 1 7 4. 3 3		

WMO Colour Code - Concentration

	Ice Free Libre de glace		1-3/10		7-8/10
	< 1/10		4-6/10		9-10/10

Code de couleurs de l'OMM - Concentration

	Fast Ice Banquise côtière		New Ice Nouvelle glace
	Undefined Indéterminée		Nilas/Grey Ice Nilas/glace grise