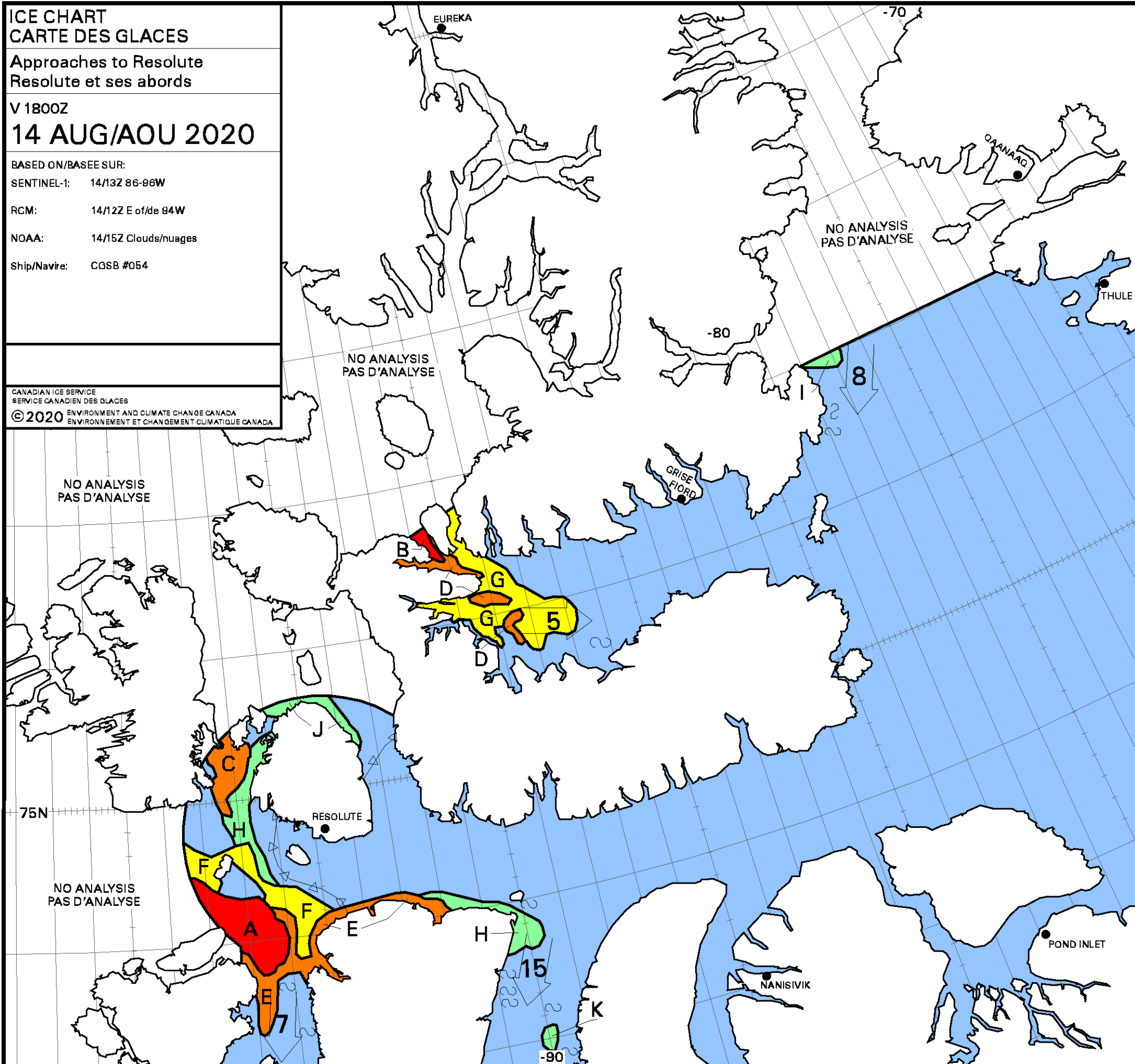


ICE CHART
CARTE DES GLACES
Approaches to Resolute
Resolute et ses abords
V 1800Z
14 AUG/AOU 2020

BASED ON/BASÉ SUR:
 SENTINEL-1: 14/13Z 86-96W
 RCM: 14/12Z E of/de 94W
 NOAA: 14/15Z Clouds/nuages
 Ship/Navire: CGSB #054

CANADIAN ICE SERVICE
 SERVICE CANADIEN DES GLACES
 ENVIRONMENT AND CLIMATE CHANGE CANADA
 ENVIRONNEMENT ET CHANGEMENT CLIMATIQUE CANADA
 © 2020



A	9+ 2 8 7 4. 5 5	B	9 1 8 7 4. 5 5
C	8 7 4. 5	D	7 7 4. 5
E	7 1 6 7 4. 5 5	F	5 7 4. 4
G	4 7 4. 4	H	3 7 4. 4
I	2 7. ~9+	J	1 7. ~9+
K	1 4. 3		

Local Drift Next 24h
 Derive Locale Prochain 24h

WMO Colour Code - Concentration

Ice Free Libre de glace	1-3/10	7-8/10
< 1/10	4-6/10	9-10/10

Code de couleurs de l'OMM - Concentration

Fast Ice Banquise côtière	New Ice Nouvelle glace
Undefined Indéterminée	Nilas/Grey Ice Nilas/glace grise