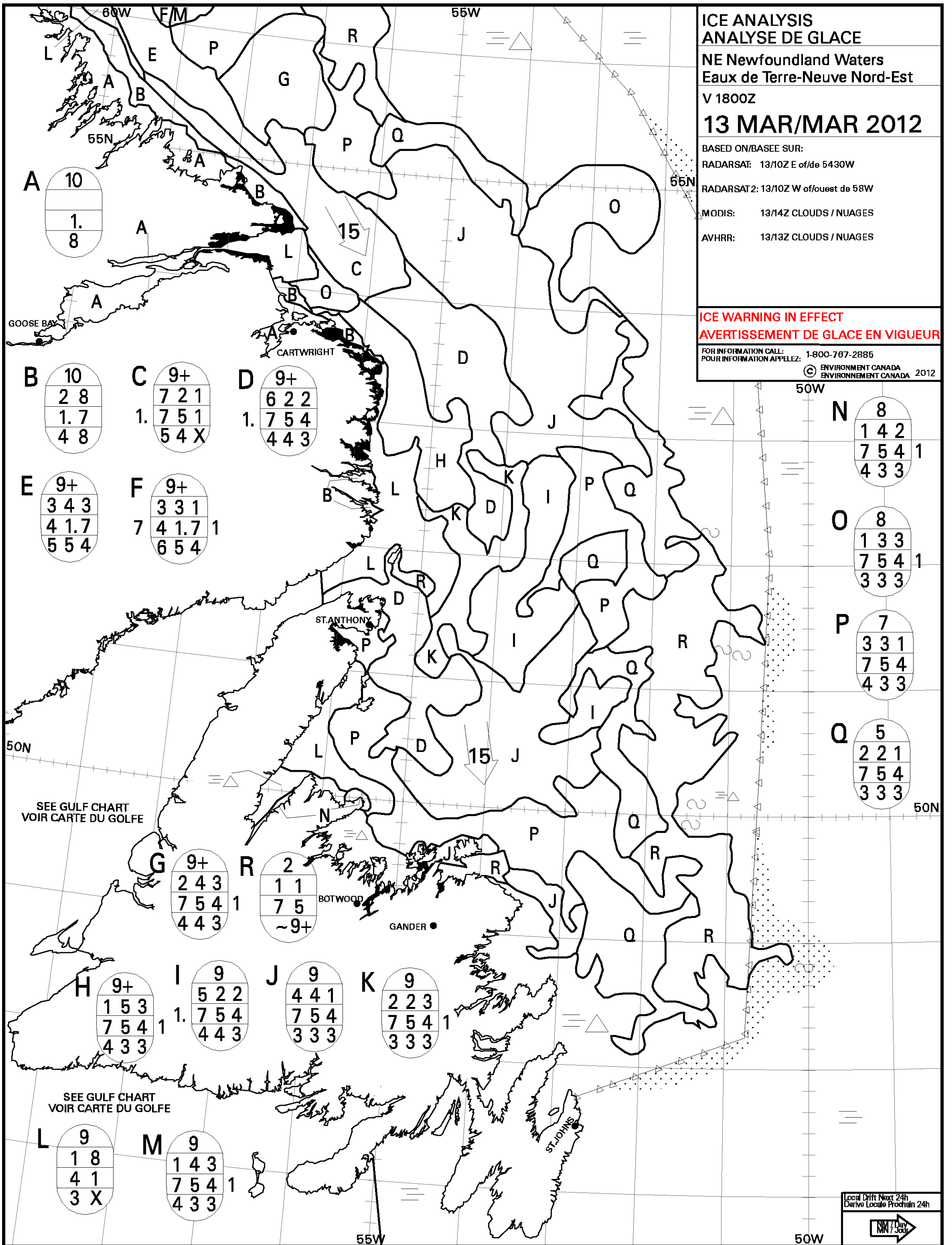


ICE ANALYSIS
ANALYSE DE GLACE
NE Newfoundland Waters
Eaux de Terre-Neuve Nord-Est
V 1800Z
13 MAR/MAR 2012

BASED ON/BASEE SUR:
 RADARSAT: 13/10Z E of/de 5430W
 RADARSAT2: 13/10Z W of/ouest de 58W
 MODIS: 13/14Z CLOUDS / NUAGES
 AVHRR: 13/13Z CLOUDS / NUAGES

ICE WARNING IN EFFECT
AVERTISSEMENT DE GLACE EN VIGUEUR

FOR INFORMATION CALL: 1-800-767-2885
 POUR INFORMATION APPELÉZ:
 © ENVIRONNEMENT CANADA
 ENVIRONNEMENT CANADA 2012



A	10
	1.
	8

B	10
	2 8
	1. 7
	4 8

C	9+
	7 2 1
	1. 7 5 1
	5 4 X

D	9+
	6 2 2
	1. 7 5 4
	4 4 3

E	9+
	3 4 3
	4 1.7
	5 5 4

F	9+
	3 3 1
	7 4 1.7 1
	6 5 4

N	8
	1 4 2
	7 5 4 1
	4 3 3

O	8
	1 3 3
	7 5 4 1
	3 3 3

P	7
	3 3 1
	7 5 4
	4 3 3

Q	5
	2 2 1
	7 5 4
	3 3 3

G	9+
	2 4 3
	7 5 4 1
	4 4 3

R	2
	1 1
	7 5
	~9+

H	9+
	1 5 3
	7 5 4 1
	4 3 3

I	9
	5 2 2
	1. 7 5 4
	4 4 3

J	9
	4 4 1
	7 5 4
	3 3 3

K	9
	2 2 3
	7 5 4 1
	3 3 3

L	9
	1 8
	4 1
	3 X

M	9
	1 4 3
	7 5 4 1
	4 3 3

Local Drift Next 24h
 Derive Locale Prochain 24h