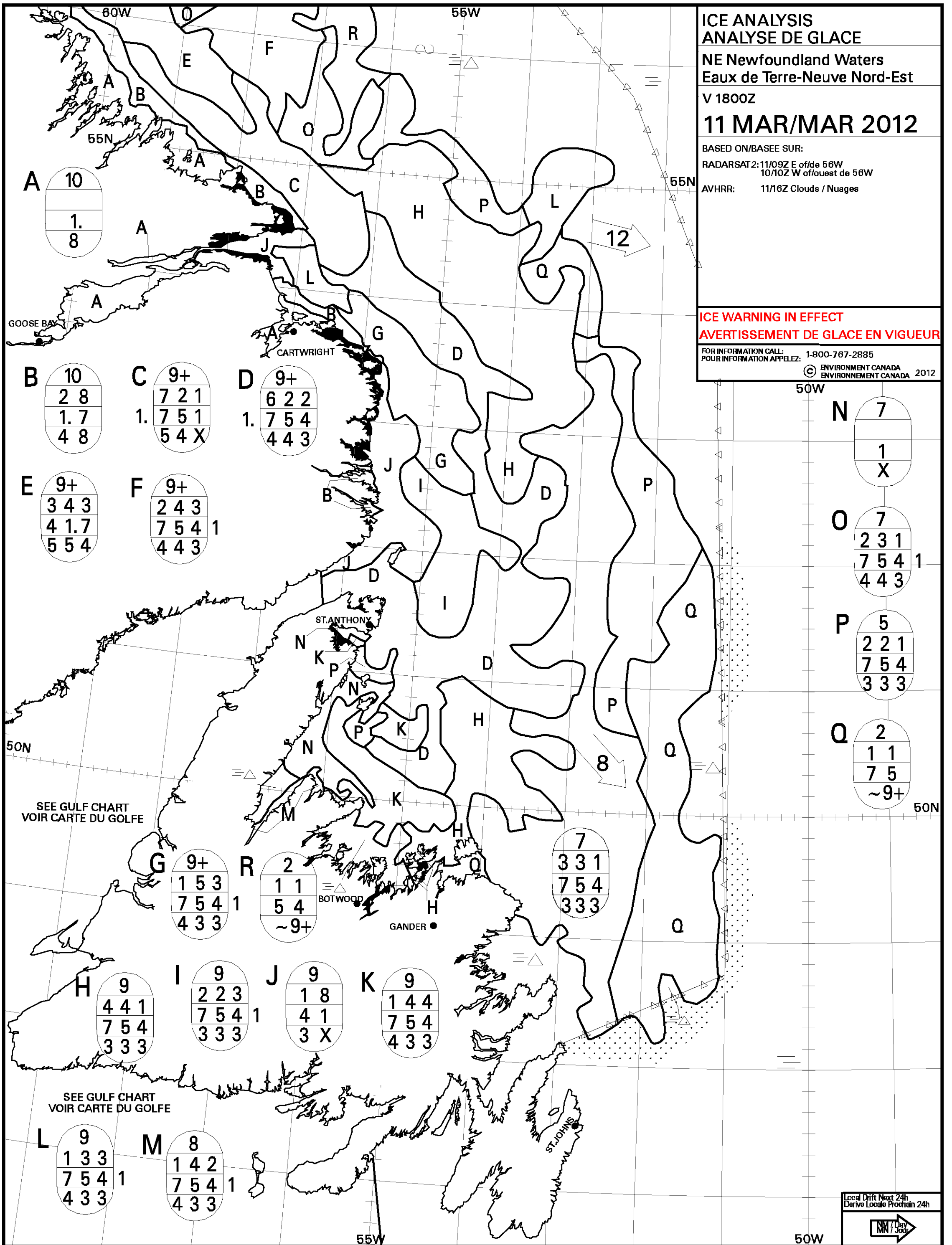


ICE ANALYSIS
ANALYSE DE GLACE
NE Newfoundland Waters
Eaux de Terre-Neuve Nord-Est
V 1800Z
11 MAR/MAR 2012

BASED ON/BASEE SUR:
 RADARSAT2: 11/09Z E of/de 56W
 10/10Z W of/ouest de 56W
 AVHRR: 11/16Z Clouds / Nuages

ICE WARNING IN EFFECT
AVERTISSEMENT DE GLACE EN VIGUEUR

FOR INFORMATION CALL: 1-800-767-2885
 POUR INFORMATION APPELEZ: 1-800-767-2885
 © ENVIRONMENT CANADA
 ENVIRONNEMENT CANADA 2012



A

10
1.
8

B

10
2 8
1. 7
4 8

C

9+
7 2 1
1. 7 5 1
5 4 X

D

9+
6 2 2
1. 7 5 4
4 4 3

E

9+
3 4 3
4 1.7
5 5 4

F

9+
2 4 3
7 5 4 1
4 4 3

N

7
1
X

O

7
2 3 1
7 5 4 1
4 4 3

P

5
2 2 1
7 5 4
3 3 3

Q

2
1 1
7 5
~9+

G

9+
1 5 3
7 5 4 1
4 3 3

R

2
1 1
5 4
~9+

7

3 3 1
7 5 4
3 3 3

H

9
4 4 1
7 5 4
3 3 3

I

9
2 2 3
7 5 4 1
3 3 3

J

9
1 8
4 1
3 X

K

9
1 4 4
7 5 4
4 3 3

L

9
1 3 3
7 5 4 1
4 3 3

M

8
1 4 2
7 5 4 1
4 3 3

Local Drift Next 24h
 Derive Locale Prochain 24h