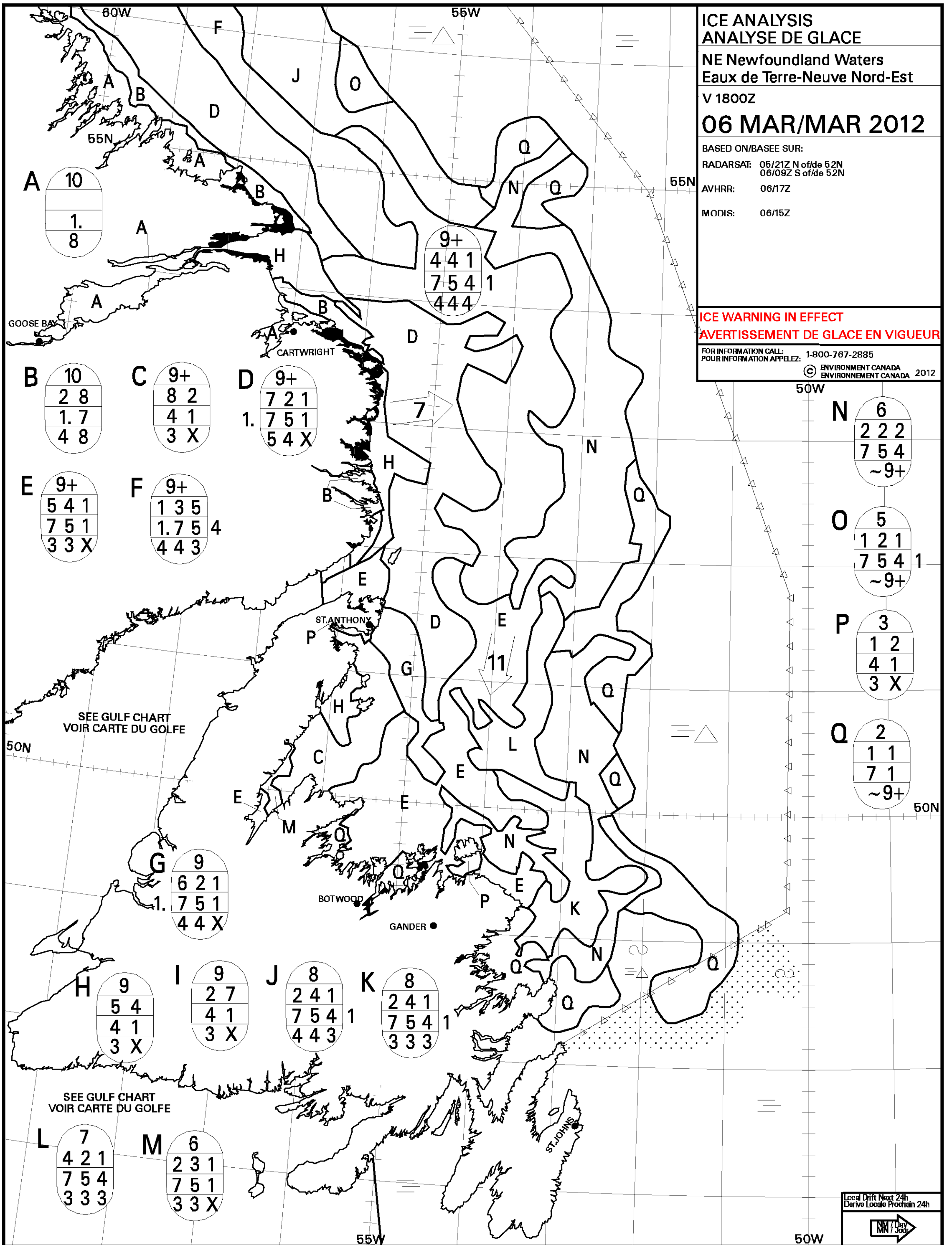


**ICE ANALYSIS**  
**ANALYSE DE GLACE**  
**NE Newfoundland Waters**  
**Eaux de Terre-Neuve Nord-Est**  
**V 1800Z**  
**06 MAR/MAR 2012**

BASED ON/BASEE SUR:  
 RADARSAT: 05/21Z N of/de 52N  
 06/09Z S of/de 52N  
 AVHRR: 06/17Z  
 MODIS: 06/15Z

**ICE WARNING IN EFFECT**  
**AVERTISSEMENT DE GLACE EN VIGUEUR**

FOR INFORMATION CALL:  
 POUR INFORMATION APPELEZ: 1-800-767-2885  
 © ENVIRONMENT CANADA  
 ENVIRONNEMENT CANADA 2012



Local Drift Next 24h  
 Derive Locale Prochain 24h  
 1 NM/Day