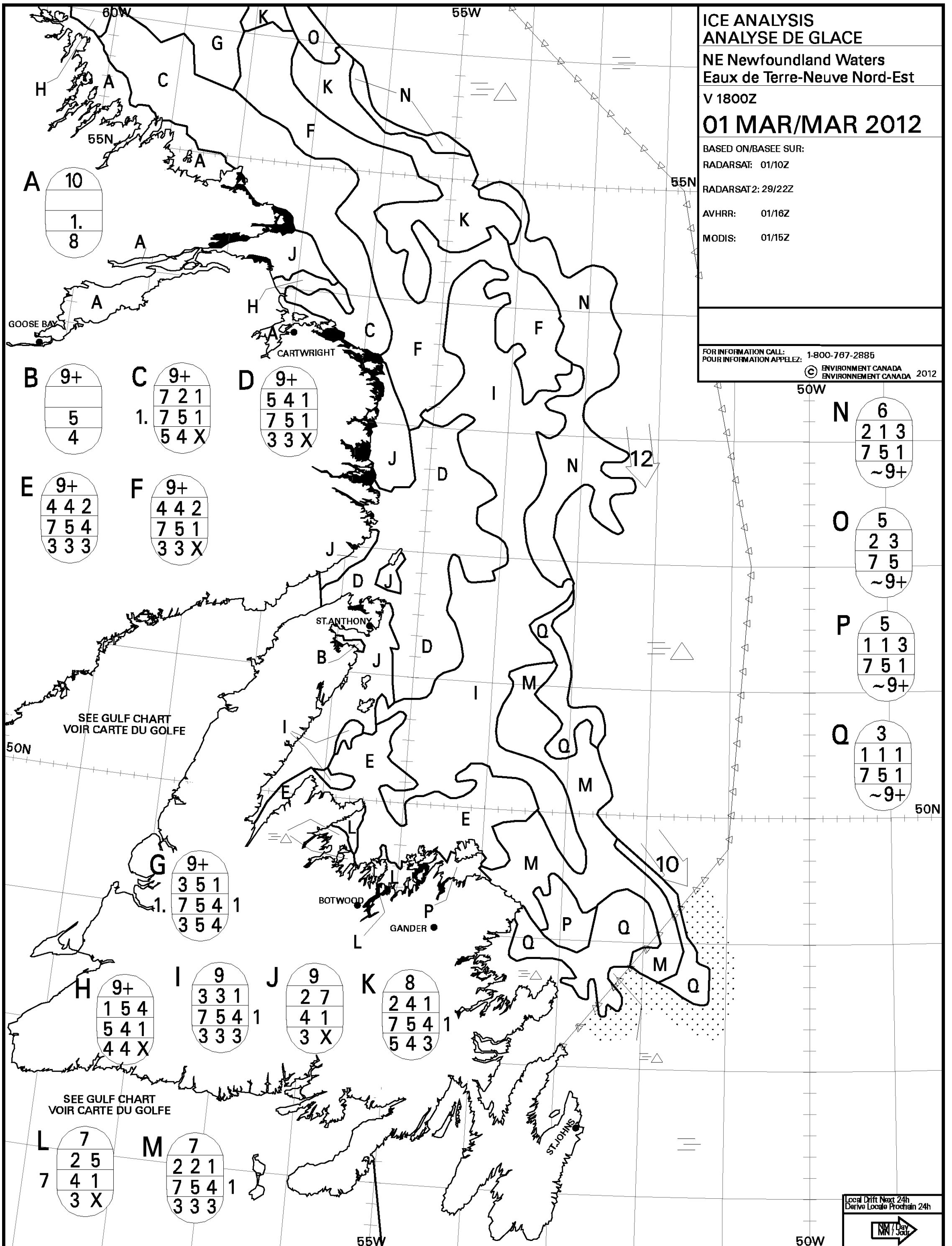


**ICE ANALYSIS**  
**ANALYSE DE GLACE**  
**NE Newfoundland Waters**  
**Eaux de Terre-Neuve Nord-Est**  
**V 1800Z**  
**01 MAR/MAR 2012**

BASED ON/BASEE SUR:  
 RADARSAT: 01/10Z  
 RADARSAT2: 29/22Z  
 AVHRR: 01/16Z  
 MODIS: 01/15Z

FOR INFORMATION CALL:  
 POUR INFORMATION APPELEZ: 1-800-767-2885  
 © ENVIRONMENT CANADA  
 ENVIRONNEMENT CANADA 2012



N	6 2 1 3 7 5 1 ~9+
O	5 2 3 7 5 ~9+
P	5 1 1 3 7 5 1 ~9+
Q	3 1 1 1 7 5 1 ~9+

Local Drift Next 24h  
 Derive Locale Prochain 24h  
 NM/Day  
 N