

**ICE ANALYSIS
ANALYSE DE GLACE CCA**

**NE Newfoundland Waters
Eaux de Terre-Neuve Nord-Est**

V 1800Z CCA 2157Z 29 FEB/FEV 2012

29 FEB/FEV 2012

BASED ON/BASEE SUR:

RADARSAT2: 29/10Z 54W-60W

AVHRR: 29/12-16Z

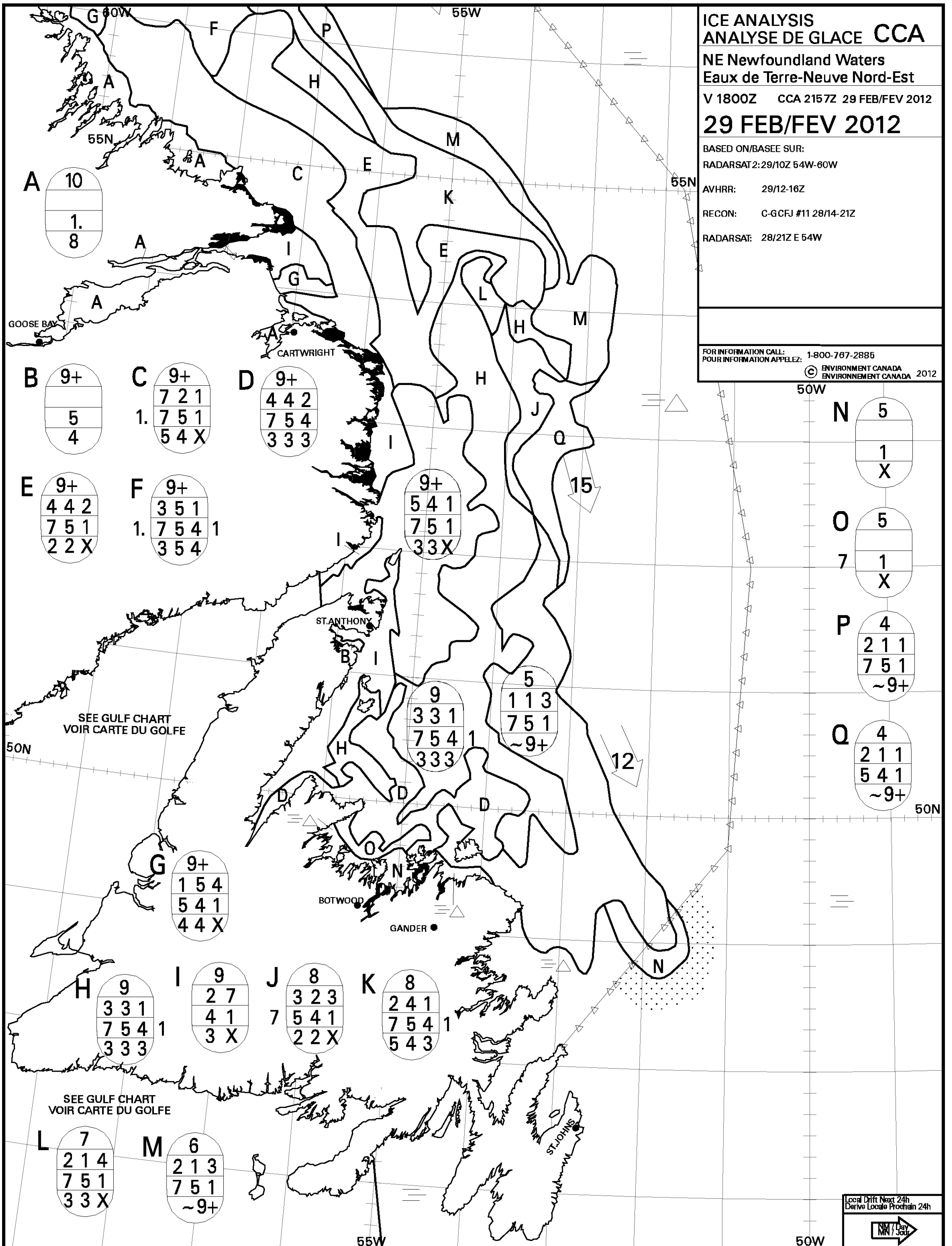
RECON: C-GCFJ #11 28/14-21Z

RADARSAT: 28/21Z E 54W

FOR INFORMATION CALL: 1-800-767-2885

POUR INFORMATION APPELEZ:

© ENVIRONMENT CANADA
ENVIRONNEMENT CANADA 2012



A 10
1.
8

B 9+
5
4

C 9+
7 2 1
1. 7 5 1
5 4 X

D 9+
4 4 2
7 5 4
3 3 3

E 9+
4 4 2
7 5 1
2 2 X

F 9+
3 5 1
1. 7 5 4 1
3 5 4

9+
5 4 1
7 5 1
3 3 X

9
3 3 1
7 5 4 1
3 3 3

5
1 1 3
7 5 1
~9+

9+
1 5 4
5 4 1
4 4 X

9
3 3 1
7 5 4 1
3 3 3

9
2 7
4 1
3 X

8
3 2 3
7 5 4 1
2 2 X

8
2 4 1
7 5 4 1
5 4 3

N 5
1
X

O 5
7 1
X

P 4
2 1 1
7 5 1
~9+

Q 4
2 1 1
5 4 1
~9+

7
2 1 4
7 5 1
3 3 X

6
2 1 3
7 5 1
~9+

Local Drift Next 24h
Derive Locale Prochain 24h

