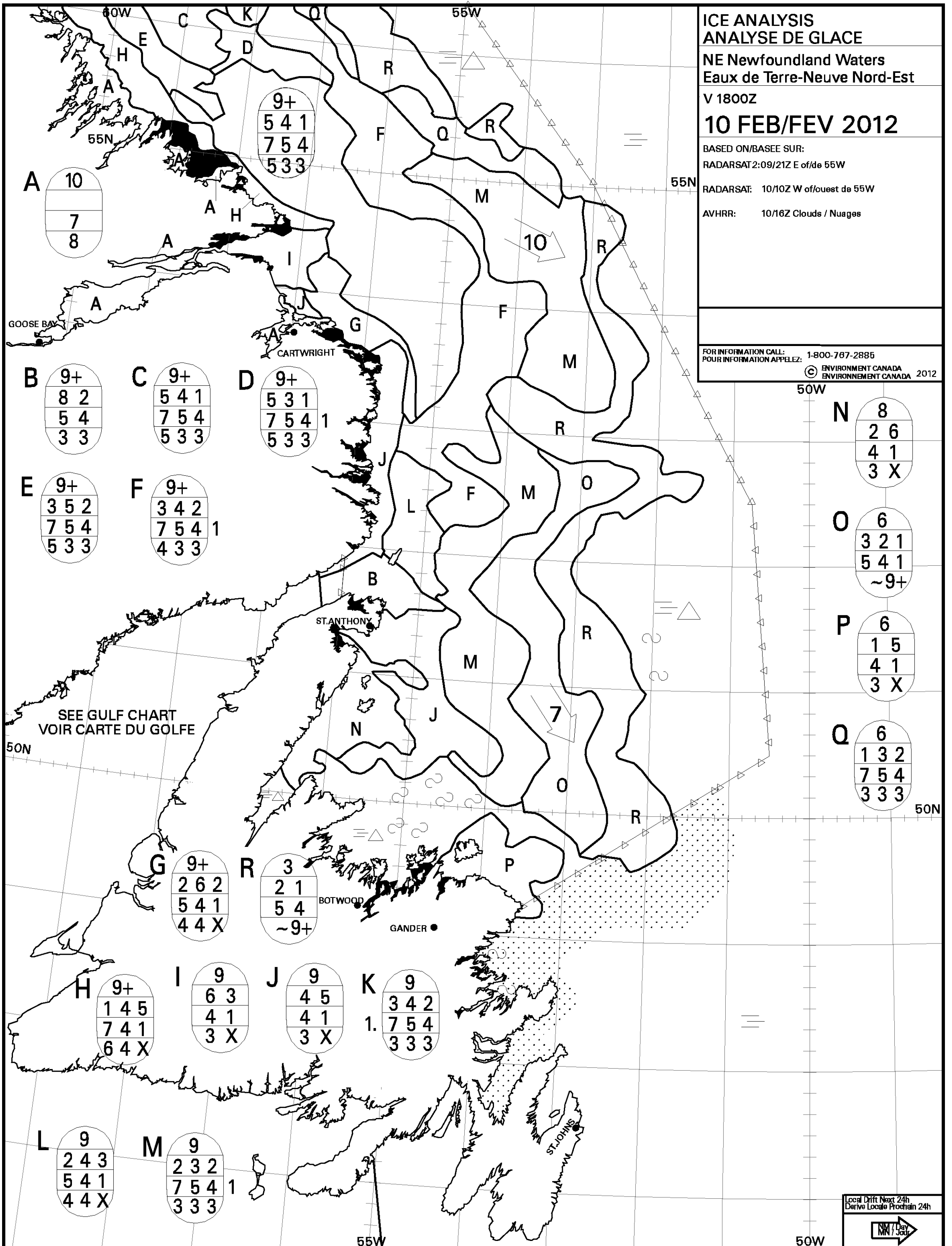


ICE ANALYSIS
ANALYSE DE GLACE
NE Newfoundland Waters
Eaux de Terre-Neuve Nord-Est
V 1800Z
10 FEB/FEV 2012

BASED ON/BASEE SUR:
 RADARSAT 2:09/21Z E of/de 55W
 RADARSAT: 10/10Z W of/ouest de 55W
 AVHRR: 10/16Z Clouds / Nuages

FOR INFORMATION CALL:
 POUR INFORMATION APPELEZ: 1-800-767-2885
 © ENVIRONMENT CANADA
 ENVIRONNEMENT CANADA 2012



A

10
7
8

9+

5 4 1
7 5 4
5 3 3

B

9+
8 2
5 4
3 3

C

9+
5 4 1
7 5 4
5 3 3

D

9+
5 3 1
7 5 4
5 3 3

E

9+
3 5 2
7 5 4
5 3 3

F

9+
3 4 2
7 5 4
4 3 3

N

8
2 6
4 1
3 X

O

6
3 2 1
5 4 1
~9+

P

6
1 5
4 1
3 X

Q

6
1 3 2
7 5 4
3 3 3

G

9+
2 6 2
5 4 1
4 4 X

R

3
2 1
5 4
~9+

H

9+
1 4 5
7 4 1
6 4 X

I

9
6 3
4 1
3 X

J

9
4 5
4 1
3 X

K

9
3 4 2
7 5 4
3 3 3

L

9
2 4 3
5 4 1
4 4 X

M

9
2 3 2
7 5 4
3 3 3

Local Drift Next 24h
 Derive Locale Prochain 24h