

ISSUED AT 28/10/2018 0542Z

VLD 28/10/2018 1800Z

LEGEND/LEGENDE



0 60 120 180 NM  
(True at 60°N Lat & 60°N)

HGTS ASL UNLESS NOTED

CB TCU AND ACC IMPLY SIG TURB AND ICG

CB IMPLIES LLWS

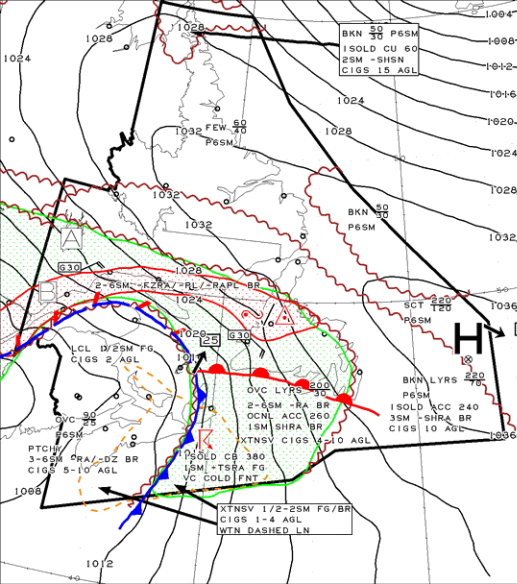
COMMENTS/COMMENTAIRES

- A: 2-4SM -SN ISOLD ACC 260  
3/4SM -SHSN CIGS 8 AGL
- B: PTCHY 3-6SM -FZDZ/-RAPL/-PL  
BR. CIGS 4-8 AGL.

----- IFR OTLK -----  
VLD: 18-06Z, 28 OCT/OCT 2018  
CIGS/VIS SN OVR SRN LABRDR.  
CIGS/VIS FZRA/PL/BR LWR N SHR  
OC/SRN LABRDR. CIGS/VIS RA FG/BR  
NF/LWR SHR OC/SERN WTRS.



All NAV CANADA content, including, without limitation, text, graphics, information architecture and coding, is copyright of, or licensed by, NAV CANADA. Except where otherwise stated in relation to specific content you may download, display, print and reproduce this material for your non-commercial and personal use, or for non-commercial use within your organization, provided that any reproduction is unaltered, shows the date of first publication, and that an attribution of the source is included. All rights are reserved. To ask for permission for any other use or for further information, please contact NAV CANADA at [info@navcan.ca](mailto:info@navcan.ca).



BKN 50/30 P6SM  
1SOLD CU 60  
2SM -SHSN  
CIGS 15 AGL

1032 FEW 50/40 P6SM

BKN 50/30 P6SM

LCL D/2SM FG  
CIGS 2 AGL

PTCHY  
3-6SM -RA/-DZ BR  
CIGS 5-10' AGL

1SOLD CB 380  
1SM +TSRA FG  
VC COLD FNT

XTNSV 1/2-2SM FG/BR  
CIGS 1-4 AGL  
WTN DASHED LN

BKN LYRS 220/70 P6SM  
1SOLD ACC 240  
3SM -SHRA BR  
CIGS 10 AGL

OVC LYRS 200/30  
2-6SM -RA BR  
OCNL ACC 260  
1SM SHRA BR  
XTNSV CIGS 4-10 AGL

SCT 120 P6SM

H

G30

G30

G30

25

1024

1028

1028

1024

1028

1032

1032

1028

1024

1020

1016

1006

1012

1016

1020

1024

1028

1032

1036

1040

1044

1048

1052

1056

1100

1104

1108

1112

1116

1120

1124

1128

1132

1136

1140