

FECN16 CWIS 131800

THIRTY DAY ICE OUTLOOK FOR THE EASTERN AND NORTHERN ARCTIC FOR MID-OCTOBER TO MID-NOVEMBER ISSUED BY ENVIRONMENT CANADA ON 13 OCTOBER 2023.

THE NEXT 30 DAY OUTLOOK WILL BE ISSUED ON 1 NOVEMBER 2023.

Summary for September 29 to October 11.

Average temperatures were near normal for southern Baffin Bay. Elsewhere, average air temperatures were above normal. Freeze-up is near 1 – 2 weeks late for Barrow Strait, Lancaster Sound, Prince Regent Inlet, Gulf of Boothia, and Committee Bay.

Weather forecast for mid-October to mid-November.

Air temperatures are forecast to be above normal for Barrow Strait and Baffin Island coast. Air temperatures are forecast to be below normal for parts of the northern Canadian Arctic Archipelago. Near normal temperatures are expected elsewhere.

Northern Baffin Bay.

October 13 – 25

- Bergy water except 9 – 9+ tenths multi-year, grey, and grey-white ice in the extreme northwestern section.
- 4 – 6 tenths new ice including 1 - 3 tenths multi-year ice near the entrance to Lancaster Sound.

October 26 – November 1

- Bergy water except 9 – 9+ tenths multi-year, grey-white and first-year ice in the extreme northwestern section.
- 7 – 8 tenths new and grey ice including 1 - 3 tenths multi-year ice in the southwestern section.

November 2 – 8

- 9 – 9+ grey and grey-white ice except 9 – 9+ multi-year and first-year ice in the extreme northwestern section.
- 9 – 9+ tenths grey-white and first-year ice including 1 – 3 tenths multi-year ice in the southwestern section.

November 9 – 15

- 9 – 9+ grey-white ice except 9 – 9+ multi-year and first-year ice in the northwestern section.
- 1 – 3 tenths multi-year ice embedded in the southwestern section.

Southwestern Baffin Bay.

October 13 – 25

- Bergy water.

October 26 – November 1

- Bergy water except 1 – 3 tenths new ice in the extreme northwestern section.

November 2 – 8

- 1 – 3 tenths new ice except 9 – 9+ tenths new and grey ice in the northern section.

November 9 – 15

- 9 – 9+ tenths new and grey ice except 9 – 9 + tenths grey and grey-white ice including a trace of multi-year ice in the northern section.

-

Pond and Navy Board Inlets.

October 13 – 18

- Bergy water.

October 19 – 25

- 1 – 3 tenths new ice.

October 26 – November 1

- 7 – 8 tenths new and grey ice.

November 2 – 8

- 9 – 9+ grey and grey-white ice.

November 9 – 15

- 9 – 9+ tenths grey-white ice.

Admiralty Inlet.

October 13 – 18

- Bergy water.

October 19 – 25

- 1 – 3 tenths new ice.

October 26 – November 1

- 9 – 9+ tenths new and grey ice.

November 2 – 8

- 9 – 9+ tenths grey and grey-white ice.

November 9 – 15

- 9 – 9+ tenths grey-white ice.

Lancaster Sound.

October 13 – 18

- Bergy water except 1 – 3 tenths new ice along parts of the coasts.
- 1 – 3 tenths multi-year ice present in the eastern section.

October 19 – 25

- 4 – 6 tenths new ice.
- 1 – 3 tenths multi-year ice present in the eastern section.

October 26 – November 1

- 9 – 9+ tenths grey ice.
- 1 – 3 tenths multi-year ice embedded in the eastern section.

November 2 – 15

- 9 – 9+ tenths grey-white ice.
- 1 – 3 tenths multi-year ice embedded in the eastern section.

Barrow Strait.

October 13 – 18

- 1 – 3 tenths new ice.

October 19 – 25

- 7 – 8 tenths new ice.

October 26 – November 1

- 9 – 9+ tenths new and grey ice.

- 1 – 3 tenths multi-year ice embedded in the extreme western section.

November 2 – 15

- 9 – 9+ tenths grey-white ice.
- 1 – 3 tenths multi-year ice embedded in the extreme western section.

Prince Regent Inlet.

October 13 – 18

- Bergy water except 1 – 3 tenths new ice along parts of the coasts.

October 19 – 25

- 7 – 8 tenths new ice.

October 26 – November 1

- 9 – 9+ tenths grey ice.

November 2 – 15

- 9 – 9+ tenths grey-white ice.

Gulf of Boothia.

October 13 – 18

- Bergy water except a trace of second-year ice in the extreme eastern section.

October 19 – 25

- Bergy water except 1 – 3 tenths new ice along parts of the coasts.
- A trace of second-year ice in the extreme eastern section.

October 26 – November 1

- 4 – 6 tenths new ice except 7 - 8 tenths grey ice in the northern and eastern sections.
- A trace of second-year ice in the extreme eastern section.

November 2 – 8

- 9 – 9+ tenths grey and grey-white ice.
- A trace of second-year ice in the extreme eastern section

November 9 – 15

- 9 – 9+ tenths grey-white ice.
- A trace of second-year ice in the extreme eastern section.

Wellington Channel.

McDougall Sound.

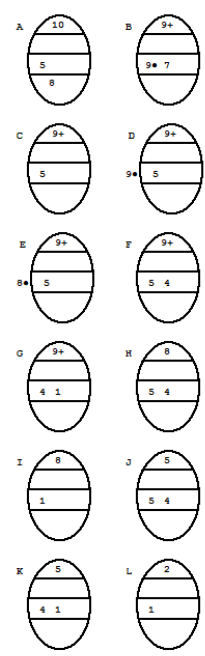
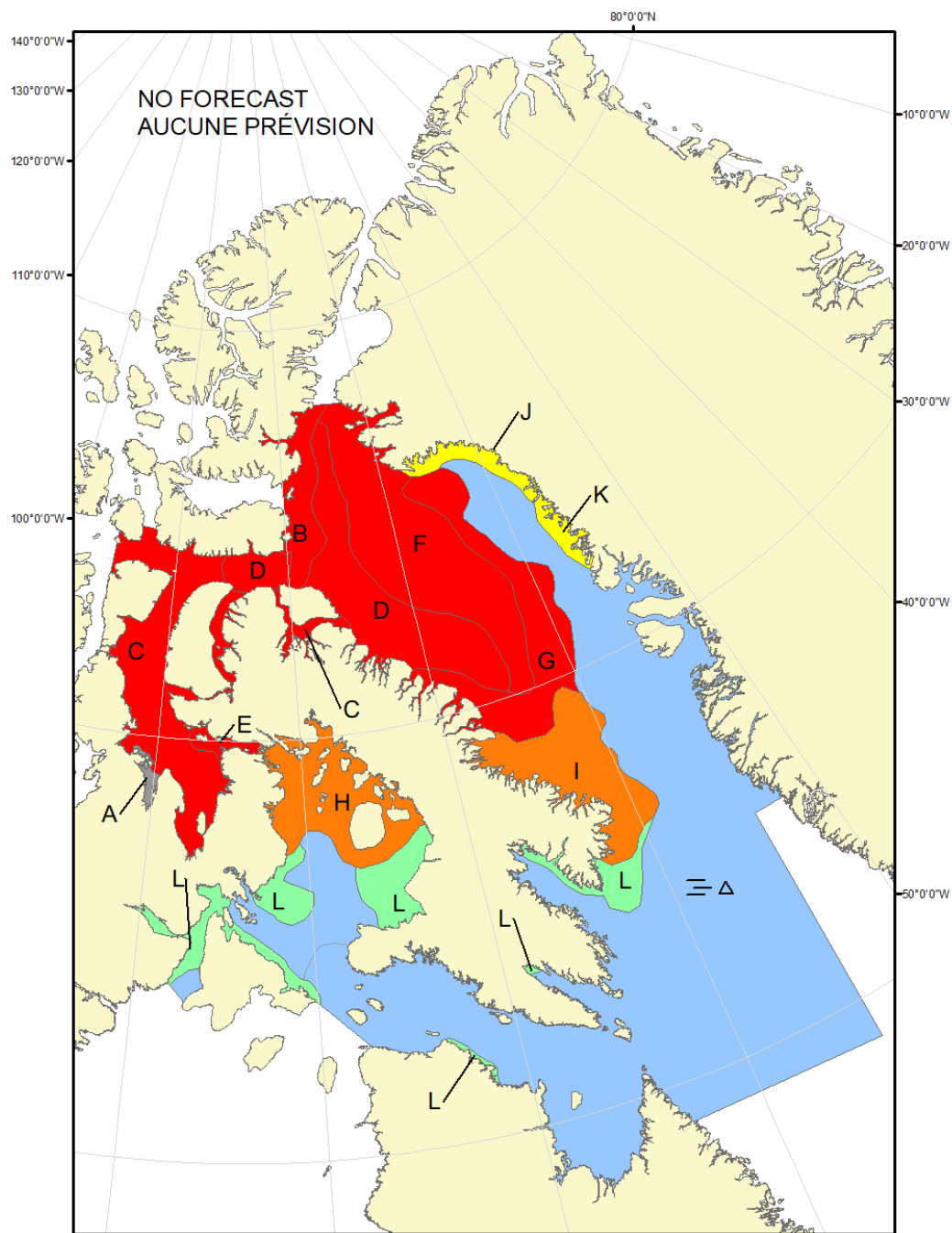
Jones Sound

Norwegian Bay

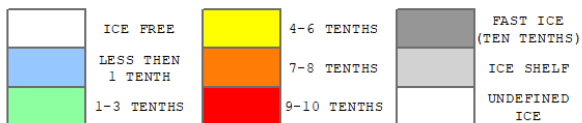
Eureka Sound

Western Kane Basin.

Forecasts have ended for the season.



COLOR CODES BASED ON TOTAL CONCENTRATION



North American Ice Service /
Service des glaces de l'Amérique du Nord
ICE FORECAST - 30 DAY
PRÉVISIONS DES GLACES - 30 JOURS
VALID/VALIDE: 15 NOV/NOV 2023