

FECN15 CWIS 271800

THIRTY DAY ICE OUTLOOK FOR HUDSON AND FOXE FOR DECEMBER ISSUED BY ENVIRONMENT CANADA ON 27 NOVEMBER 2020.

THESE ARE THE LAST FORECAST OF THE SEASON.

Summary for November 11 to 25.

Average air temperatures have been below normal values over most of the region except above normal air temperatures over Foxe Basin and Davis Strait.

Weather forecast for November 27 to December 31.

Air temperatures are forecast to be above normal values over Davis Strait and southern Labrador Coast. Elsewhere Air temperatures are forecast to be near normal.

Southern Labrador Coast.

November 27-30

- Occasional areas of 1-3 tenths new ice with some 4-6 tenths new and grey ice in the bays along parts of the coast in the northern section.
- Elsewhere, bergy water.

December 1-7

- 1-3 tenths new and grey ice with areas of 7-8 tenths grey ice along the coast in the northern section.
- Bergy water with occasional areas of 4-6 tenths new ice along the southern coast.
- Elsewhere, bergy water.

December 8-20

- 4-6 tenths new and grey ice with areas of 9-9+ tenths grey ice along the coast.
- Elsewhere, bergy water.

December 21-31

- 7-8 tenths grey and grey-white ice with areas of 9-9+ tenths grey-white ice along the coast.
- Elsewhere, bergy water.

Northern Labrador Coast.

November 27-December 7

- 1-3 tenths new ice with areas of 7-8 tenths new and grey ice in the bays along parts of the coast.
- Elsewhere, bergy water.

December 8-20

- 4-6 tenths new and grey ice with areas of 9-9+ tenths grey with some grey-white ice along the coast.
- Elsewhere, bergy water.

December 21-31

- 7-8 tenths grey ice with areas of 9-9+ tenths grey and grey-white ice along the coast and in the extreme northwestern section.
- Elsewhere, bergy water.

Lake Melville.

November 27-30

- 1-3 tenths new ice with areas of 7-8 tenths new and grey ice.

December 1-7

- 7-8 tenths grey ice with areas of 9-9+ tenths grey with some grey-white ice.

December 8-21

- 9-9+ tenths grey and grey-white ice.
- Consolidated grey-white ice along the coast and in the extreme western section.

December 22-31

- Consolidated grey-white ice with some thin first-year ice.

Southern Davis Strait.

November 27-30

- Areas of 4-6 tenths new and grey ice with patches of 9-9+ tenths grey ice along the coast.
- Elsewhere, bergy water.

December 1-7

- 7-8 tenths grey ice with some grey-white ice with areas of 9-9+ tenths grey and grey-white ice along the coast and in the extreme northwestern section.
- Elsewhere, bergy water.

December 8-22

- 7-8 tenths grey ice and some grey-white ice with areas of 9-9+ tenths grey-white ice in the western section.
- Elsewhere, bergy water.

December 22-31

- 9-9+ tenths grey-white ice in the western section.
- Elsewhere, bergy water.

Northern Davis Strait.

November 27-December 6

- 4-6 tenths new and grey ice with areas of 9-9+ tenths grey ice in the western section.
- 9-9+ tenths grey-white ice in the northwestern section.
- Elsewhere, bergy water.

December 7-15

- 9-9+ tenths grey-white and thin first-year ice along the coast and in the northwestern section.
- Elsewhere in the western section, 9-9+ tenths grey and grey-white ice.
- Elsewhere, bergy water.

December 16-22

- 9-9+ tenths thin first-year ice in the northwestern section, north of Cape Dyer, and along parts of the coast south of Cape Dyer.
- Elsewhere in the western and central sections, 9-9+ tenths grey and grey-white ice.
- Elsewhere, bergy water.

December 23-31

- 9-9+ tenths thin first-year ice in the northwestern section, north of Cape Dyer, and along parts of the coast south of Cape Dyer.
- Elsewhere in the western and central sections, 9-9+ tenths grey-white ice with some thin first-year ice.
- Elsewhere, bergy water.

Frobisher Bay.

November 27-30

- 7-8 tenths new ice with areas of 9-9+ tenths new and grey ice in the northwestern section and along parts of the coast.
- Elsewhere, bergy water with areas of 4-6 tenths new and grey ice.

December 1-7

- 9-9+ tenths grey and grey-white ice in the northwestern section and along parts of the northern coast.
- Elsewhere, 7-8 tenths grey ice with areas of 9-9+ tenths grey ice with some grey-white ice.

December 8-20

- 9-9+ tenths grey-white ice.

December 21-31

- 9-9+ tenths grey-white and thin first-year ice.

Cumberland Sound.

November 27-30

- 7-8 tenths new and grey ice with areas of 9-9+ tenths grey ice in the extreme northwestern section and along the southwestern coast.
- Elsewhere, bergy water with 1-3 tenths new ice.

December 1-7

- 9-9+ tenths grey ice with some grey-white ice in the northwestern section and along the southwestern coast.
- Elsewhere, 7-8 tenths new and grey ice with areas of 9-9+ tenths grey ice.

December 8-20

- 9-9+ tenths grey-white ice.

December 21-31

- 9-9+ tenths grey-white and thin first-year ice.

Hudson Strait.

November 27-30

- 7-8 tenths new and grey ice with areas of 9-9+ tenths grey and some grey-white ice along the coast in the northwestern section.
- Elsewhere along the coast, 4-6 tenths new and grey ice with areas of 9-9+ tenths grey ice.
- Elsewhere in the western section, bergy water with some areas of 4-6 tenths new ice.
- Elsewhere, bergy water.

December 1-7

- 7-8 tenths grey and some grey-white ice with areas of 9-9+ tenths grey-white ice along the coast and in the western section.
- Elsewhere, 1-3 tenths new ice with areas of 7-8 tenths new and grey ice.

December 8-15

- 9-9+ tenths grey-white ice along parts of the coast.
- Elsewhere, 7-8 tenths new and grey ice with areas of 9-9+ tenths grey.

December 16-23

- 9-9+ tenths grey-white ice with some thin first-year ice along parts of the coast.
- Elsewhere, 9-9+ tenths grey and grey-white ice.

December 24-31

- 9-9 tenths grey-white ice and some thin first-year ice.

Ungava Bay.

November 27-30

- 7-8 tenths grey ice with areas of 9-9+ tenths grey ice with some grey-white ice along the coast.
- Elsewhere, bergy water.

December 1-7

- 9-9+ tenths grey and grey-white ice along the coast.
- Elsewhere, 1-3 tenths new ice with areas of 4-6 tenths new and grey ice.

December 8-15

- 9-9+ tenths grey-white ice along the coast.
- Elsewhere, 4-6 tenths new ice with areas of 7-8 tenths new and grey ice.

December 16-23

- 9-9 tenths grey-white ice along the coast and in the western section.
- Elsewhere, 7-8 tenths grey ice with areas of 9-9+ tenth grey and grey-white ice.

December 24-31

- 9-9 tenths grey-white ice with some thin first-year ice.

Foxe Basin

Northwestern Hudson Bay.

Forecast ended for the season.

Eastern Hudson Bay – James Bay.

November 27-30

- 7-8 tenths new and grey ice with areas of 9-9+ tenths grey and grey-white ice along the coast in James Bay and the northeastern coast of Hudson Bay.
- Elsewhere along parts of the coast, 1-3 tenths new ice with areas of 7-8 tenths new and grey ice.
- Elsewhere, open water.

December 1-7

- 7-8 tenths grey and grey-white ice with areas of 9-9+ tenths grey-white ice along the western and southern coast in James Bay and the northeastern coast of Hudson Bay.
- Elsewhere along the coast, 4-6 tenths new and grey ice with areas of 9-9+ tenths grey ice.
- Elsewhere, open water with areas of 4-6 tenths new and grey ice.

December 8-15

- 7-8 tenths grey and grey-white ice with areas of 9-9+ tenths grey-white ice in the western and southern sections of James Bay and the northern section of eastern Hudson Bay.
- Elsewhere along the coast, 4-6 tenths new and grey ice with areas of 9-9+ tenths grey ice along the coast and around the Belcher Islands.
- Elsewhere, open water.

December 16-23

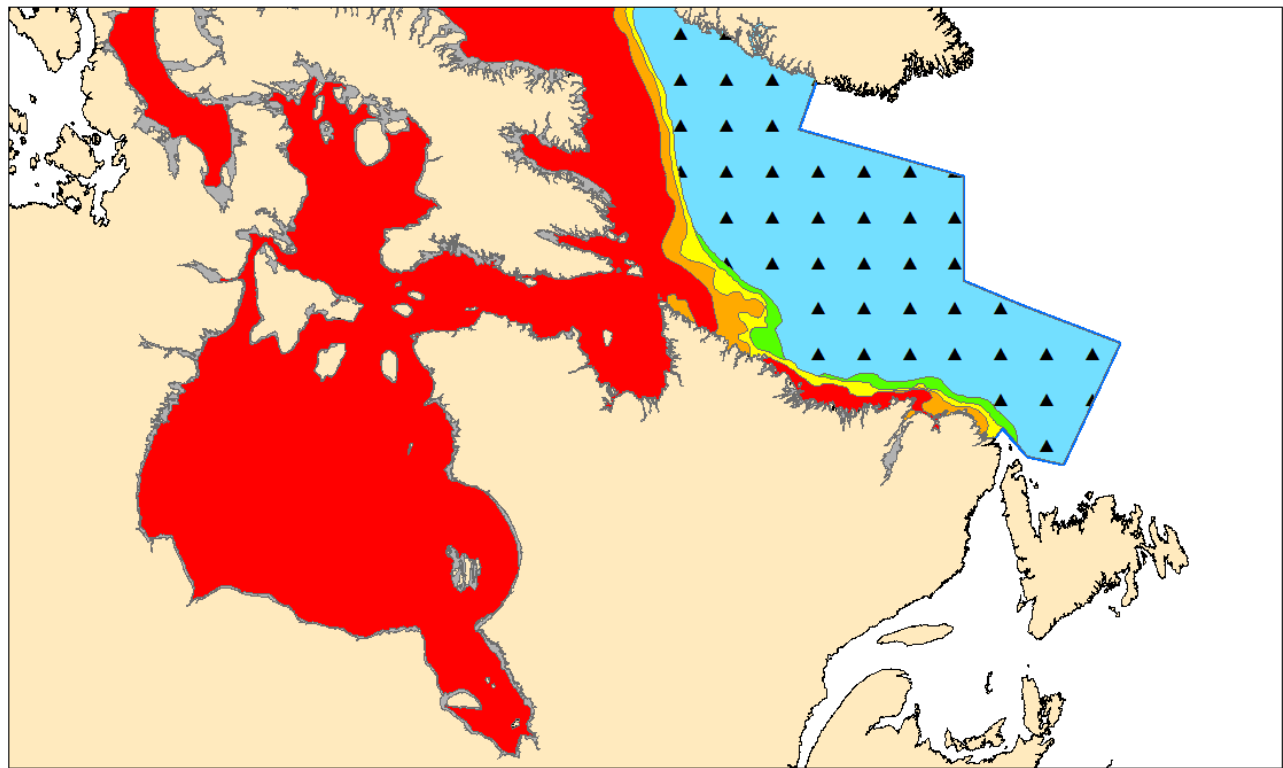
- 7-8 tenths grey and grey-white ice with areas of 9-9+ grey-white ice.

December 24-31

- 9-9 tenths grey-white ice with some thin first-year ice.

Southwestern Hudson Bay.

Forecast ended for the season.



COLOR CODES BASED ON TOTAL CONCENTRATION		
ICE FREE	4-6 TENTHS	FAST ICE (TEN TENTHS)
LESS THEN 1 TENTH	7-8 TENTHS	ICE SHELF
1-3 TENTHS	9-10 TENTHS	UNDEFINED ICE

North American Ice Service /
Service des glaces de l'Amérique du Nord
ICE FORECAST - 30 DAY
PRÉVISIONS DES GLACES - 30 JOURS
VALID/VALIDE: 31 DEC/DEC 2020