

FECN15 CWIS 131800

THIRTY DAY ICE OUTLOOK FOR HUDSON AND FOXE FOR MID-NOVEMBER TO MID-DECEMBER ISSUED BY ENVIRONMENT CANADA ON 13 NOVEMBER 2020.

THE NEXT 30 DAY OUTLOOK WILL BE ISSUED ON 27 NOVEMBER 2020.

### **Summary for October 28 to November 11.**

Average air temperatures have been below normal values over most of the region except above normal air temperatures over Foxe Basin and northern Davis Strait.

### **Weather forecast for November 13 to December 15.**

Air temperatures are forecast to be below normal values over the Foxe Basin and western Hudson Bay. Elsewhere Air temperatures are forecast to be above normal.

#### **Southern Labrador Coast.**

November 13-20

- Bergy water.

November 21-30

- Occasional areas of 1-3 tenths new ice with some 4-6 tenths new and grey ice in the bays along parts of the coast.
- Elsewhere, bergy water.

December 1-15

- 4-6 tenths new and grey ice with areas of 9-9+ tenths grey ice along the coast.
- Elsewhere, bergy water.

#### **Northern Labrador Coast.**

November 13-21

- 1-3 tenths new ice with areas of 7-8 tenths new and grey ice in the bays along parts of the coast.
- Elsewhere, bergy water.

November 22-30

- 4-6 tenths new and grey ice with areas of 9-9+ tenths grey with some grey-white ice along the coast.
- Elsewhere, bergy water.

December 1-15

- 7-8 tenths grey with areas of 9-9+ tenths grey and grey-white ice along the coast.
- Elsewhere, bergy water.

#### **Lake Melville.**

November 13-30

- 1-3 tenths new ice with areas of 7-8 tenths new and grey ice.

December 1-7

- 7-8 tenths grey ice with areas of 9-9+ tenths grey with some grey-white ice.

December 8-15

- 9-9+ tenths grey and grey-white ice.
- Consolidated grey-white ice along the coast and in the extreme western section.

## **Southern Davis Strait.**

November 13-19

- Areas of 4-6 tenths new and grey ice with areas of 9-9+ tenths grey ice along the coast.
- Elsewhere, bergy water.

November 20-30

- 7-8 tenths grey with some grey-white ice with areas of 9-9+ tenths grey and grey-white ice in the extreme western section.
- Elsewhere, bergy water.

December 1-7

- 7-8 tenths new and grey ice with areas of 9-9+ tenths grey and some grey-white ice in the extreme western section.
- Elsewhere, bergy water.

December 8-15

- 9-9+ tenths grey and grey-white ice with areas of 9-9+ tenths grey-white ice in the western section.
- Elsewhere, bergy water.

## **Northern Davis Strait.**

November 13-18

- 4-6 tenths new ice with areas of 9-9+ tenths new and grey ice along the coast.
- Elsewhere, bergy water.

November 19-24

- 7-8 tenths new and grey with areas of 9-9+ tenths grey ice along the coast and in the northwestern section.
- Elsewhere, bergy water.

November 25-December 6

- 7-8 tenths grey and grey-white ice with areas of 9-9+ tenths grey and grey-white ice in the western section.
- 9-9+ tenths grey-white ice in the northwestern section.
- Elsewhere, bergy water.

December 7-15

- 9-9+ tenths grey-white ice in the western section.
- Elsewhere, bergy water.

## **Frobisher Bay.**

November 13-19

- 4-6 tenths new and grey ice with areas of 9-9+ tenths new and grey ice in the extreme northwestern section.
- Elsewhere along the coast, 1-3 tenths new ice and areas of 7-8 tenths new and grey ice along the coast.
- Otherwise, bergy water with a few patches of 1-3 tenths new ice.

November 20-30

- 9-9+ tenths grey ice with some grey-white ice in the northwestern section.
- Elsewhere, 4-6 tenths new and grey ice with areas of 9-9+ tenths grey ice.

December 1-7

- 7-8 tenths grey and some grey-white ice with areas of 9-9+ tenths grey-white ice in the northwestern section.
- Elsewhere, 4-6 tenths grey ice with areas of 7-8 tenths grey ice with some grey-white ice.

December 8-15

- 9-9+ tenths grey-white ice in the northwestern section.
- Elsewhere, 7-8 tenths grey ice with areas of 9-9 tenths grey ice with some grey-white ice.

## **Cumberland Sound.**

November 13-20

- 7-8 tenths new and grey ice with areas of 9-9+ tenths grey ice in the extreme northwestern section and along the southwestern coast.
- Elsewhere, bergy water with 1-3 tenths new ice and areas of 7-8 tenths new and grey ice along the coast.

November 21-30

- 9-9+ tenths grey ice with some grey-white ice in the northwestern section and along the southwestern coast.
- Elsewhere, 4-6 tenths new and grey ice and areas of 9-9+ tenths grey ice.

December 1-7

- 9-9+ tenths grey-white ice.

December 8-15

- 9-9+ tenths grey-white ice with some thin first-year ice.

## **Hudson Strait.**

November 13-21

- 7-8 tenths new and grey ice with areas of 9-9+ tenths grey ice along the northern coast.
- Elsewhere along parts of the coast, 1-3 tenths new ice with areas of 7-8 tenths new and grey ice.
- Elsewhere, bergy water.

November 22-30

- 7-8 tenths grey ice and some grey-white ice with areas of 9-9+ tenths grey and grey-white ice along the coast in the northwestern section.
- Elsewhere along the coast, 4-6 tenths new and grey ice with areas of 9-9+ tenths grey ice.
- Elsewhere, bergy water with some areas of 4-6 tenths new ice.

December 1-7

- 7-8 tenths grey and grey-white ice with areas of 9-9+ tenths grey-white ice along the coast in the northwestern section.
- Elsewhere along the coast, 7-8 tenths grey ice with areas of 9-9+ tenths grey-white ice.
- In the western section of the strait, 1-3 tenths new ice with areas of 7-8 tenths new and grey ice except 9-9+ tenths grey ice in the extreme western section.
- In the eastern section of the strait, bergy water with areas of 4-6 tenths new ice.

December 8-15

- 9-9+ tenths grey-white ice along the coast in the northwestern section.
- In the western and central sections of the strait, 7-8 tenths new and grey ice with areas of 9-9+ tenths grey ice.
- In the eastern section of the strait, bergy water with areas of 4-6 tenths new ice.

## **Ungava Bay.**

November 13-18

- 1-3 tenths new ice with areas of 7-8 tenths new and grey ice along parts of the coast.
- Elsewhere, bergy water.

November 19-30

- 7-8 tenths grey ice with areas of 9-9+ tenths grey with some grey-white ice along the coast.
- Elsewhere, 1-3 tenths new ice with areas of 4-6 tenths new and grey ice.

December 1-7

- 9-9+ tenths grey and grey-white ice along the coast.
- Elsewhere, 1-3 tenths new ice with areas of 4-6 tenths new and grey ice.

December 8-15

- 9-9+ tenths grey and grey-white ice along the coast and in the western section.
- Elsewhere, 1-3 tenths new ice with areas of 7-8 tenths new and grey ice.

## **Foxe Basin.**

Forecast ended for the season.

## **Northwestern Hudson Bay.**

November 13-16

- 7-8 tenths new and grey ice with areas of 9-9+ tenths grey with some grey-white ice along the coast.
- Elsewhere, open water.

November 17-22

- 7-8 tenths new and grey ice with areas of 9-9+ tenths grey with some grey-white ice along the coast.
- Areas of 4-6 tenths new ice with areas of 9-9+ tenths new and grey ice forming in the extreme southwestern section, northeast of Churchill.
- Elsewhere, open water.

November 23-30

- 9-9+ tenths grey-white ice in the western and northwestern sections and south of Coats Island.
- Elsewhere, 4-6 tenths grey ice with areas of 7-8 tenths grey with some grey-white ice.

December 1-15

- 9-9+ tenths grey, grey-white and some thin first-year ice.

## **Eastern Hudson Bay – James Bay.**

November 13-21

- 4-6 tenths new ice with areas of 9-9+ tenths new and grey ice along parts of the coast.
- Elsewhere, open water.

November 22-30

- 7-8 tenths new grey ice with areas of 9-9+ tenths grey and grey-white ice along the coast in James Bay and the northeastern coast of Hudson Bay.
- Elsewhere along the coast, 1-3 tenths new ice with areas of 7-8 tenths new and grey ice.
- Elsewhere, open water.

December 1-7

- 7-8 tenths grey and grey-white ice with areas of 9-9+ tenths grey-white ice along the western and southern coast in James Bay and the northeastern coast of Hudson Bay.
- Elsewhere along the coast, 4-6 tenths new and grey ice with areas of 9-9+ tenths grey ice.
- Elsewhere, open water with areas of 4-6 tenths new and grey along the coast.

December 8-15

- 7-8 tenths grey and grey-white ice with areas of 9-9+ tenths grey-white ice in the western and southern sections of James Bay and the northern section of eastern Hudson Bay.
- Elsewhere along the coast, 4-6 tenths new and grey ice with areas of 9-9+ tenths grey ice along the coast and around the Belcher Islands.
- Elsewhere, open water.

## **Southwestern Hudson Bay.**

November 13-17

- 7-8 tenths new and grey ice with areas of 9-9+ tenths grey ice along the coast.
- Elsewhere, open water.

November 18-22

- 7-8 tenths grey ice with areas of 9-9+ tenths grey and some grey-white ice along the coast.

- Area of 7-8 tenths new ice with patches of 9-9+ tenths new and grey in the western section, north of York Factory.
- Elsewhere, open water.

November 23-30

- 7-8 tenths grey and grey-white ice with areas of 9-9+ tenths grey-white ice along the coast.

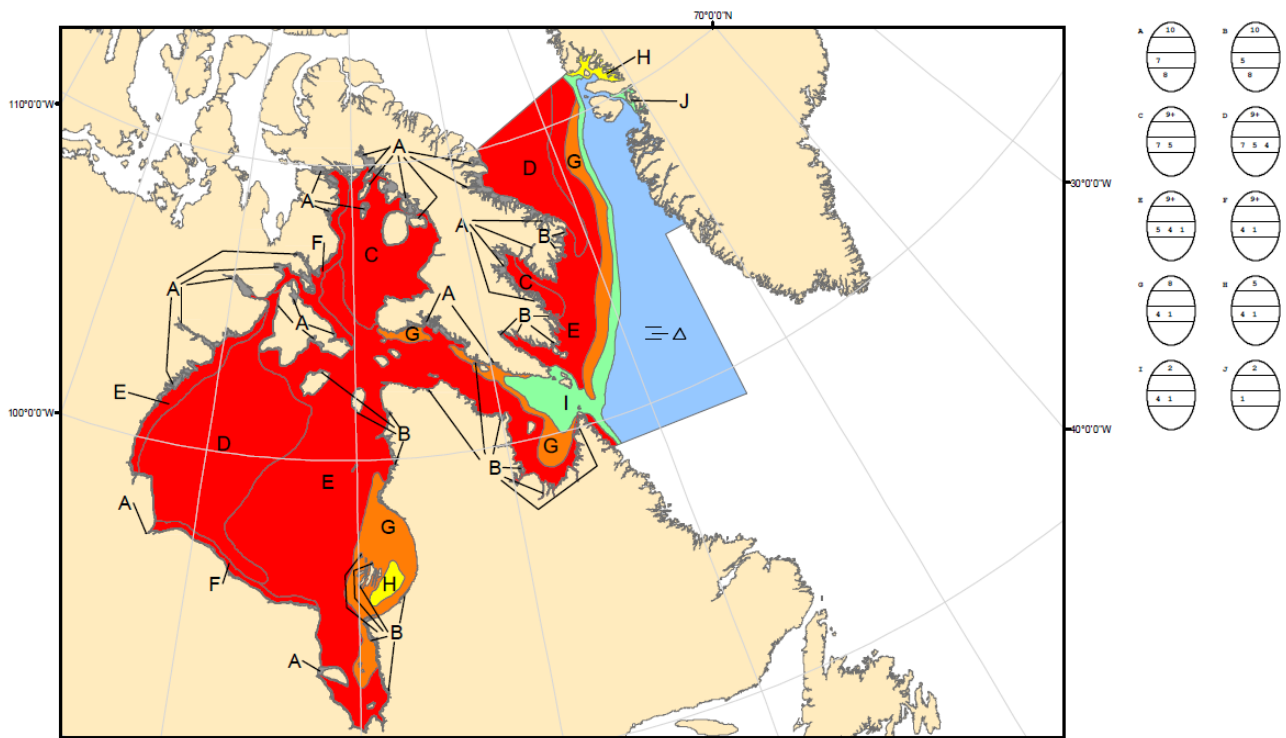
- Elsewhere in the western section, 4-6 tenths new and grey ice with areas of 7-8 tenths grey ice.
- Elsewhere, open water with patches of 1-3 tenths new ice.

December 1-7

- 9-9+ tenths grey-white ice along the coast.
- Elsewhere in the western and northern sections, 7-8 tenths new and grey ice with areas of 9-9+ tenths grey ice.
- Elsewhere, open water with patches of 1-3 tenths new ice.

December 8-15

- 9-9+ tenths grey-white ice with some thin first-year ice along the coast.
- Elsewhere, 7-8 tenths grey ice with areas of 9-9+ tenths grey and some grey-white ice.



**COLOR CODES BASED ON TOTAL CONCENTRATION**

	ICE FREE		4-6 TENTHS		FAST ICE (TEN TENTHS)
	LESS THEN 1 TENTH		7-8 TENTHS		ICE SHELF
	1-3 TENTHS		9-10 TENTHS		UNDEFINED ICE

**North American Ice Service /  
Service des glaces de l'Amérique du Nord  
ICE FORECAST - 30 DAY  
PRÉVISIONS DES GLACES - 30 JOURS  
VALID/VALIDE: 15 DEC/DEC 2020**