

FECN15 CWIS 161800

THIRTY DAY ICE OUTLOOK FOR HUDSON AND FOXE FOR MID-OCTOBER TO MID-NOVEMBER ISSUED BY ENVIRONMENT CANADA ON 16 OCTOBER 2020.

THE NEXT 30 DAY OUTLOOK WILL BE ISSUED ON 30 OCTOBER 2020.

### **Summary for September 30 to October 14.**

Average air temperatures have been near to below normal values over most of Hudson Bay and Ungava Bay. Elsewhere, average air temperatures have been above normal.

### **Weather forecast for October 16 to November 15.**

Air temperatures are forecast to be near normal values over Hudson Bay. Elsewhere, air temperature are forecast to be above normal.

#### **Southern Labrador Coast.**

October 16-November 15

- Bergy water.

#### **Northern Labrador Coast.**

October 16-November 15

- Bergy water.

#### **Lake Melville.**

October 16-November 15

- Ice free.

#### **Southern Davis Strait.**

October 16-November 8

- Bergy water.

November 9-15

- Areas of 1-3 tenths new ice forming along the coast.
- Elsewhere, bergy water.

#### **Northern Davis Strait.**

October 16-November 8

- Bergy water.

November 9-15

- Areas of 1-3 tenths new ice forming along the coast.
- Elsewhere, bergy water.

#### **Frobisher Bay.**

October 16-25

- Bergy water.

October 26-November 15

- 1-3 tenths new ice with areas of 7-8 tenths new and grey ice along parts of the coast.
- Elsewhere, bergy water.

## **Cumberland Sound.**

October 16-25

- Bergy water.

October 26-November 15

- 1-3 tenths new ice with areas of 7-8 tenths new and grey ice along parts of the coast.
- Elsewhere, bergy water.

## **Hudson Strait.**

October 16-28

- Bergy water.

October 29-November 15

- 1-3 tenths new ice with areas of 7-8 tenths new and grey ice along parts of the coast.
- Elsewhere, bergy water.

## **Ungava Bay.**

October 16-31

- Bergy water.

November 1-15

- 1-3 tenths new ice with areas of 7-8 tenths new and grey ice along parts of the coast.
- Elsewhere, bergy water.

## **Foxe Basin.**

October 16-23

- 4-6 tenths new and grey ice with areas of 7-8 tenths grey ice along the coast in the eastern and northern sections.
- 1-3 tenths new ice with areas of 4-6 tenths new and grey ice along parts of the coast in the southwestern section.
- Elsewhere, open water to ice free.

October 24-November 7

- 7-8 tenths new and grey ice with areas of 9-9+ tenths new and grey ice including some grey-white ice along the coast in the eastern and northern sections.
- 1-3 tenths new and grey ice with areas of 7-8 tenths grey ice along parts of the coast in the southeastern and southwestern sections.
- Elsewhere, open water.

November 8-15

- 7-8 tenths grey ice including some grey-white ice with areas of 9-9+ tenths grey and grey-white ice in the eastern and northern sections.
- 4-6 tenths new and grey ice with areas of 7-8 tenths grey ice along parts of the coast in the southeastern and southwestern sections.
- Elsewhere, open water.

## **Northwestern Hudson Bay.**

October 16-25

- Open water to ice free.

October 26-November 7

- 1-3 tenths new ice with areas of 4-6 tenths new ice along the coast of Southampton Island and along parts of the coast in the northwestern section.
- Elsewhere, open water.

November 8-15

- 4-6 tenths new and grey ice with areas of 9-9+ tenths grey with some grey-white ice along the coast.
- Elsewhere, open water.

## **Eastern Hudson Bay – James Bay.**

October 16-31

- Ice free to open water.

November 1-15

- 1-3 tenths new ice with areas of 7-8 tenths new and grey ice along parts of the coast.
- Elsewhere, open water.

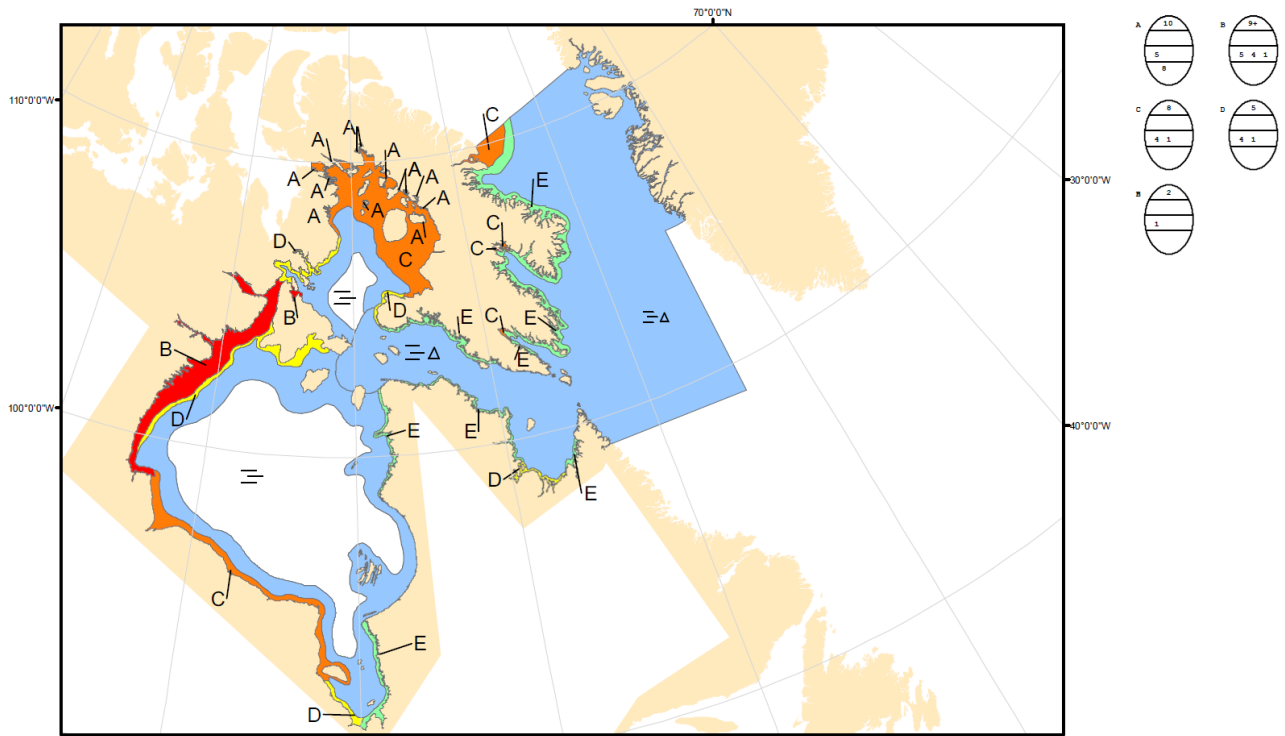
## **Southwestern Hudson Bay.**

October 16-31

- Ice free to open water.

November 1-15

- 1-3 tenths new ice with areas of 7-8 tenths new and grey ice along the coast.
- Elsewhere, open water.



COLOR CODES BASED ON TOTAL CONCENTRATION

	ICE FREE		4-6 TENTHS		FAST ICE (TEN TENTHS)
	LESS THEN 1 TENTH		7-9 TENTHS		ICE SHELF
	1-3 TENTHS		9-10 TENTHS		UNDEFINED ICE

North American Ice Service /  
 Service des glaces de l'Amérique du Nord  
 ICE FORECAST - 30 DAY  
 PRÉVISIONS DES GLACES - 30 JOURS  
 VALID/VALIDE: 15 NOV/NOV 2020