

FECN15 CWIS 301800

THIRTY DAY ICE OUTLOOK FOR HUDSON AND FOXE FOR OCTOBER ISSUED BY ENVIRONMENT CANADA ON 30 SEPTEMBER 2020.

THE NEXT 30 DAY OUTLOOK WILL BE ISSUED ON 16 OCTOBER 2020.

Summary for September 15 to 28

Average air temperatures have been near to below normal values over most regions except above normal over Ungava Bay, Hudson Strait and the northern part of Hudson Bay.

Weather forecast for September 30 to October 31.

Air temperatures are forecast to be above normal values over most of the region except near normal over James Bay and most of Hudson Bay

Southern Labrador Coast.

September 30-October 31

- Bergy water.

Northern Labrador Coast.

September 30-October 31

- Bergy water.

Lake Melville.

September 30-October 31

- Ice free.

Southern Davis Strait.

September 30-October 31

- Bergy water.

Northern Davis Strait.

September 30-October 31

- Bergy water.

Frobisher Bay.

September 30-October 23

- Bergy water.

October 24-31

- 1-3 tenths new ice with areas of 4-6 tenths new ice along parts of the coast.

- Elsewhere, bergy water.

Cumberland Sound.

September 30-October 20

- Bergy water.

October 21-31

- 1-3 tenths new ice with areas of 4-6 tenths new ice along parts of the coast on the northern side of the strait.
- Elsewhere, bergy water.

Hudson Strait.

September 30-October 25

- Bergy water.

Ungava Bay.

September 30-October 31

- Bergy water.

Foxe Basin.

September 30-October 7

- Open water except a few isolated patches of 1-3 tenths new ice in the northern section.
- Elsewhere, ice free/bergy water.

October 8-15

- Patches of 1-3 tenths new ice forming along parts of the coast in the northern and eastern sections.
- Elsewhere, open water/bergy water.

October 16-23

- 4-6 tenths grey ice with areas of 7-8 tenths grey ice along the coast in the eastern and northern section.
- 1-3 tenths new ice with areas of 4-6 tenths new and grey ice along parts of the coast in the southwestern section.

October 24-31

- 7-8 tenths grey ice with some grey-white ice with areas of 9-9+ tenths grey and grey-white ice along the coast in the eastern section and in the northern section.
- 1-3 tenths new and grey ice with areas of 7-8 tenths grey ice along parts of the coast in the southeastern and southwestern sections.

Northwestern Hudson Bay.

September 30-October 10

- Ice free/bergy water.

October 11-18

- Patches of 1-3 tenths new ice forming along parts of the coast in the northern section.
- Elsewhere, open water/bergy water.

October 19-31

- 1-3 tenths new ice with areas of 4-6 tenths new ice along the coast of Southampton Island and along parts of the coast in the northwestern section.
- Elsewhere, open water/bergy water.

Eastern Hudson Bay – James Bay.

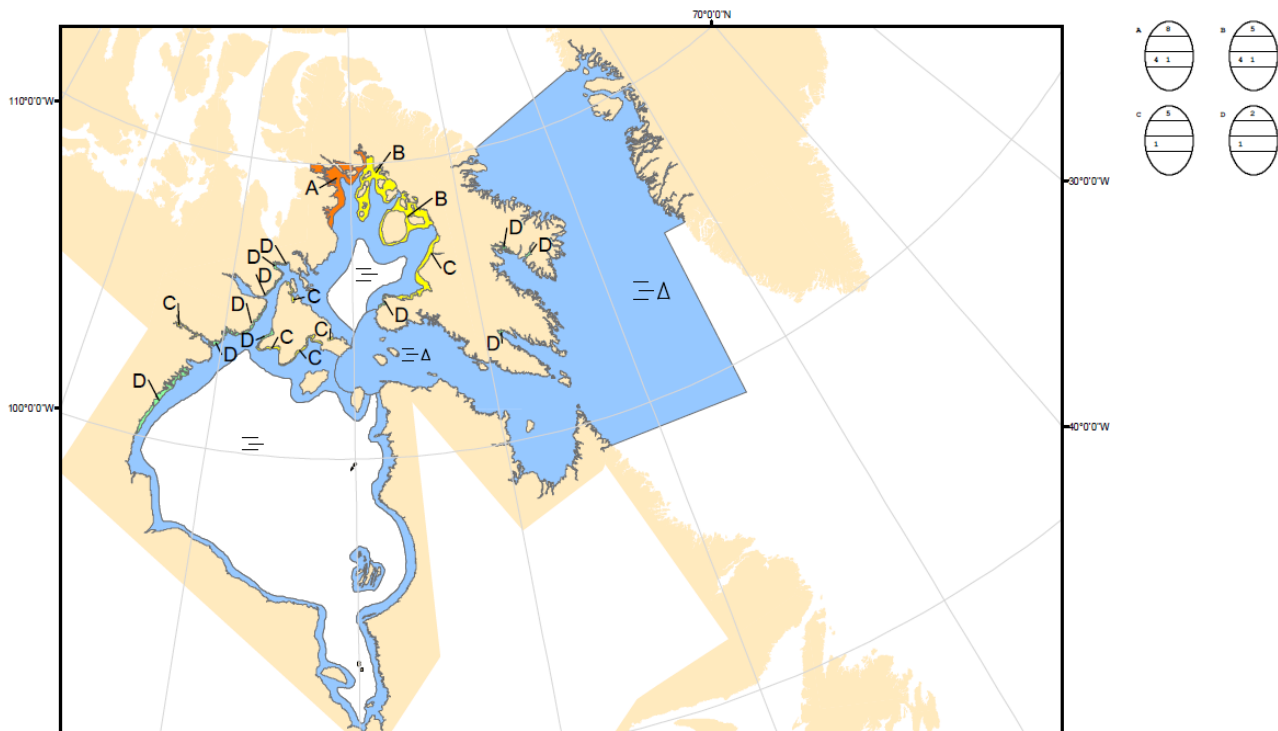
September 30-October 31

- Ice free to open water.

Southwestern Hudson Bay.

September 30-October 31

- Ice free to open water.



COLOR CODES BASED ON TOTAL CONCENTRATION			
	ICE FREE		FAST ICE (TEN TENTHS)
	LESS THEN 1 TENTH		ICE SHELF
	1-3 TENTHS		UNDEFINED ICE
	4-6 TENTHS		
	7-8 TENTHS		
	9-10 TENTHS		

North American Ice Service /
 Service des glaces de l'Amérique du Nord
 ICE FORECAST - 30 DAY
 PRÉVISIONS DES GLACES - 30 JOURS
 VALID/VALIDE: 31 OCT/ OCT 2020