

FECN15 CWIS 021800

THIRTY DAY ICE OUTLOOK FOR HUDSON AND FOXE FOR SEPTEMBER ISSUED BY ENVIRONMENT CANADA ON 02 SEPTEMBER 2020.

THE NEXT 30 DAY OUTLOOK WILL BE ISSUED ON 16 SEPTEMBER 2020.

Summary for August 15 to 31.

Average air temperatures have been above normal values over most of Hudson Bay, Foxe Basin, Hudson Strait, Davis Strait and the Labrador coast. Average air temperatures have been slightly below normal values along the coast in southwestern Hudson Bay and all of James Bay. Ice melt is 1-2 weeks earlier than normal in Foxe Basin.

Weather forecast for September 2 to 30.

Air temperatures are forecast to be near normal values over western Hudson Bay and most of Foxe Basin. Elsewhere, air temperatures are forecast to be above normal values.

Southern Labrador Coast.

September 2-30

- Bergy water.

Northern Labrador Coast.

September 2-30

- Bergy water.

Lake Melville.

September 2-30

- Ice free.

Southern Davis Strait.

September 2-30

- Bergy water.

Northern Davis Strait.

September 2-30

- Bergy water.

Frobisher Bay.

September 2-30

- Bergy water.

Cumberland Sound.

September 2-30

- Bergy water.

Hudson Strait.

September 2-30
- Bergy water.

Ungava Bay.

September 2-30
- Bergy water.

Foxe Basin.

September 2-5

Igloolik marine region.

- 1-3 tenths first-year ice with areas of 4-6 tenths first-year ice in the extreme eastern section, in Fury and Hecla Strait and the extreme northwestern section of the Igloolik marine region.

- Elsewhere, open water.

East Foxe and Prince Charles marine regions.

- 1-3 tenths first-year ice with patches of 7-8 tenths first-year ice.

West Foxe marine region.

- Open water/bergy water.

September 6-10

Igloolik marine region.

- Open water/bergy water with patches of 1-3 tenths ice in Fury and Hecla Strait and the extreme northwestern section of the Igloolik marine region.

- 1-3 tenths ice with patches of 4-6 tenths ice in the extreme eastern section, east of Rowley Island and the Spicer Islands.

- Elsewhere, open water.

East Foxe marine region.

- Open water with patches of 1-3 tenths ice.

Prince Charles marine region.

- Open water with areas of 1-3 tenths ice in the southeastern and extreme northwestern sections.

West Foxe marine region.

- Ice free/bergy water.

September 11-18

- Ice melting completely to open water/bergy water except occasional patches of 1-3 tenths ice in Fury and Hecla Strait and the extreme northwestern section of Foxe Basin.

September 19-30

-Ice free/bergy water.

Northwestern Hudson Bay.

September 2-30

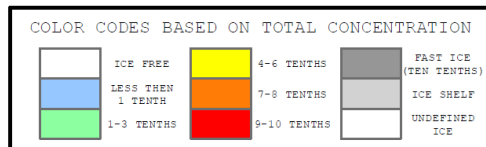
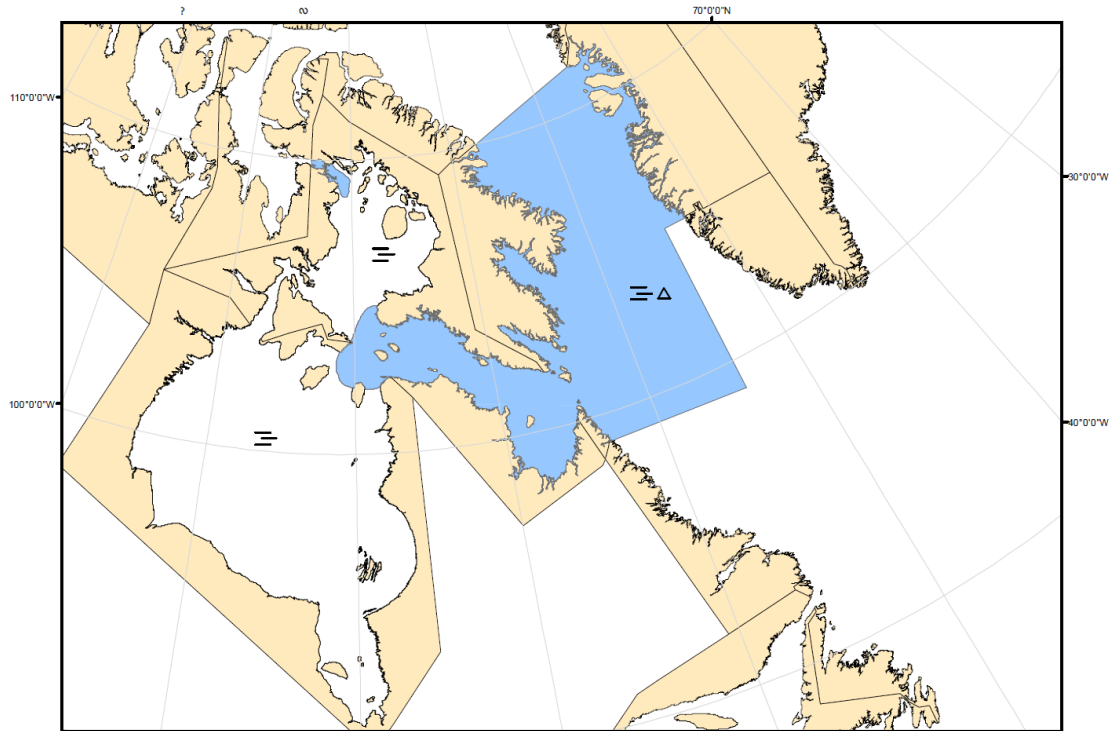
- Ice free/bergy water.

Eastern Hudson Bay – James Bay.

September 2-30
- Ice free.

Southwestern Hudson Bay.

September 2-30
- Ice free.



North American Ice Service /
Service des glaces de l'Amérique du Nord
ICE FORECAST - 30 DAY
PRÉVISIONS DES GLACES - 30 JOURS
VALID/VALIDE: 30 SEP/SEPT. 2020