

FECN14 CWIS 131800

THIRTY DAY ICE OUTLOOK FOR THE WESTERN AND CENTRAL ARCTIC FOR MID-OCTOBER TO MID-NOVEMBER ISSUED BY ENVIRONMENT CANADA ON 13 OCTOBER 2023.

THE NEXT 30 DAY OUTLOOK WILL BE ISSUED ON 1 NOVEMBER 2023.

Summary for September 29 to October 11.

Average air temperatures were above normal for all regions except near normal along parts of the Alaskan Coast. Freeze-up is currently 2-3 weeks late for western Beaufort Sea, M'Clure Strait, Viscount Melville Sound, McClintock Channel, Larsen Sound and Peel Sound. Freeze-up is 1 week ahead of normal for parts of the Alaskan coast.

Weather forecast for mid-October to mid-November.

Air temperatures are forecast to be above normal for regions.

Southeastern Beaufort Sea.

October 13 – 25

- Open water except 1 – 3 tenths multi-year ice in the extreme northeastern section.
- 4 – 6 tenths new and grey ice along parts of the coast.

October 26 – November 1

- 1 – 3 tenths new and grey ice except 9 – 9+ tenths grey ice including 1 – 3 tenths multi-year ice in the extreme northeastern section.
- Consolidated grey ice along parts of the coast.

November 2 – 8

- 4 – 6 tenths new and grey ice except 9 – 9+ grey-white ice including 1 – 3 tenths multi-year ice in the extreme northeastern section.
- Consolidated grey-white ice along parts of the coast.

November 9 – 15

- 7 – 8 tenths new and grey ice except 9 – 9+ grey-white ice including 1 – 3 tenths multi-year ice in the extreme northeastern section.
- Consolidated grey-white ice along parts of the coast.

Amundsen Gulf.

October 13 – 25

- Ice free except open water along parts of the coasts.

October 26 – November 1

- Open water except 4 – 6 new and grey ice including a trace of multi-year ice near Prince of Wales Strait.
- 1 – 3 tenths new ice along parts of the coasts.

November 2 – 8

- Open water except 7 – 8 tenths grey and grey-white ice including a trace of multi-year ice near Prince of Wales Strait.
- 4 – 6 tenths new and grey ice along parts of the coasts.

November 9 – 15

- 7 – 8 tenths new and grey ice except 9 – 9+ grey-white ice including a trace of multi-year ice near Prince of Wales Strait.

Prince of Wales Strait.

October 13 – 18

- Bergy water.

October 19 – 25

- Bergy water except 4 – 6 tenths new ice including a trace of multi-year ice in the northern section.

October 26 – November 1

- 7 - 8 tenths new and grey ice including a trace of multi-year ice.

November 2 – 8

- 7 - 8 tenths grey and grey-white ice including a trace of multi-year ice.

November 9 – 15

- 9 – 9+ tenths grey and grey-white ice including a trace of multi-year ice.

Northern Alaskan Coast.

October 13 – 18

- Open water except 7 – 8 tenths new ice along parts of the coast.

October 19 – 25

- Open water except 7 – 8 tenths new and grey ice along parts of the coast.

October 26 – November 1

- Open water except 9 – 9+ tenths new and grey ice along the coast.

November 2 – 8

- 1 – 3 tenths new ice except 9 – 9+ tenths grey and grey-white ice along the coast.

November 9 – 15

- 4 – 6 tenths new and grey ice except 9 – 9+ tenths grey-white ice along the coast.

Western Alaskan Coast.

October 13 – 18

- Open water except 7 – 8 tenths new ice along parts of the coast.

October 19 – November 15

- Open water except 7 – 8 tenths new and grey ice along parts of the coast.

Northern Beaufort Sea south of 75°N.

October 13 – 18

- Bergy water except 9 – 9+ tenths multi-year and grey ice in the northeastern section.
- 4 – 6 tenths new and grey ice including 1 – 3 tenths multi-year ice in the extreme northwestern section.

October 19 – 25

- 1 – 3 tenths new ice except 9 – 9+ tenths multi-year, grey, and grey-white ice in the northeastern section.
- 4 – 6 tenths new and grey ice including a trace of multi-year ice in the northwestern section.

October 26 – November 1

- 4 – 6 tenths new and grey ice except 9 – 9+ tenths multi-year and grey-white ice in the northeastern section
- 9 – 9+ tenths new and grey ice including a trace of multi-year ice in the northwestern section.

November 2 – 8

- 9 – 9+ tenths multi-year, grey-white, and first-year ice in the northern and extreme eastern sections.
- 9 – 9+ tenths new and grey ice including a trace of multi-year ice in the southern section.

November 9 – 15

- 9 – 9+ tenths multi-year, grey-white, first-year ice in the northern and extreme eastern sections.
- 9 – 9+ tenths grey and grey-white ice including a trace of multi-year ice in the southern section.

Coronation Gulf.

October 13 – 25

- Ice free except open water along parts of the coasts.

October 26 – November 8

- Open water except 1 – 3 tenths new ice along parts of the coasts.

November 9 – 15

- Open water except 7 – 8 tenths new ice in the eastern section.
- 1 – 3 tenths new ice along parts of the coasts.

Queen Maud Gulf.

October 13 – 25

- Open water.

October 26 – November 1

- Open water except 1 – 3 tenths new ice along the coasts.

November 2 – 8

- Open water except 7 – 8 tenths new and grey ice along the coasts.

November 9 – 15

- 9 – 9+ tenths grey and grey-white ice

Victoria Strait – Larsen Sound.

October 13 – 18

- Open water except 1 – 3 tenths new ice along parts of the coasts.

October 19 – 25

- 4 – 6 tenths new ice.

October 26 – November 1

- 7 – 8 tenths new and grey.

November 2 – 8

- 9 – 9+ tenths grey and grey-white ice.

November 9 – 15

- 9 – 9+ tenths grey-white ice.

Peel Sound.

October 13 - 18

- Open water except 1 – 3 tenths new ice along parts of the coasts.

October 19 – 25

- 7 – 8 tenths new ice.

October 26 – November 1

- 9 – 9+ tenths new and grey ice.

November 2 – 8

- 9 – 9+ tenths grey and grey-white ice.

November 9 – 15

- 9 – 9+ tenths grey-white ice.

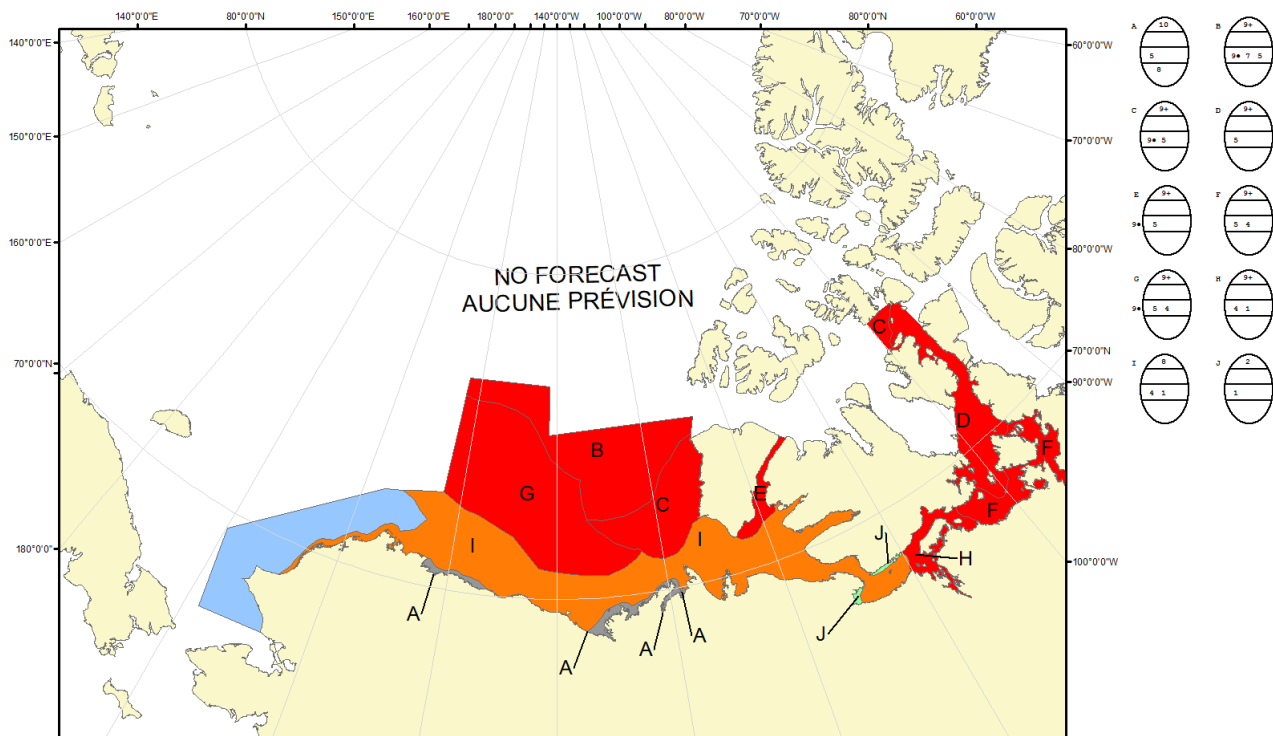
Arctic Ocean north of 75°N.

M'Clintock Channel.

Viscount Melville Sound.

M'Clure Strait.

Forecast have ended for the season.



COLOR CODES BASED ON TOTAL CONCENTRATION					
	ICE FREE		4-6 TENTHS		FAST ICE (TEN TENTHS)
	LESS THEN 1 TENTH		7-8 TENTHS		ICE SHELF
	1-3 TENTHS		9-10 TENTHS		UNDEFINED ICE

North American Ice Service /
Service des glaces de l'Amérique du Nord
ICE FORECAST - 30 DAY
PRÉVISIONS DES GLACES - 30 JOURS
VALID/VALIDE: 15 NOV/NOV 2023